



Australian Government
**Australian Institute of
Health and Welfare**

Mental Health Establishments

National Minimum Data Set

2018-19 version 2.30 July 2018

As at 2 April, 2019

Table of Contents

1. 2018-19 MHE NMDS.....	3
1.1. Essential definitions	3
1.2. Changes for 2018-19.....	3
1.3. Reporting statistical units	4
1.4. Data model of the MHE Extract.....	8
1.5. Data integrity	10
1.6. Data set specification (DSS)	10
2. Submission and delivery of MHE NMDS data files.....	55
2.1. Timelines.....	55
2.2. File type and naming convention	55
2.3. Department of Health supplementary non-government organisation information.....	56
2.4. Additional information and queries	56

1. 2018-19 MHE NMDS

1.1. Essential definitions

Scope - Mental health establishments 2018-19 (METeOR ID [677892](#)).
Statistical unit - Specialised mental health service (METeOR ID [268984](#)).

1.2. Changes for 2018-19

The specific detailed changes to the 2018-19 (version 2.30) specifications, compared to 2017-18 (version 2.20) are listed below.

1.2.1. Changes to the data model

The data model changes to the 2018-19 specifications, compared to 2017-18 are listed in [Table 1.1](#).

Table 1.1 Changes made to 2018-19 definitions compared to 2017-18

Data elements	Details	Rationale
Available bed - overnight stay mental health hospital-in-the-home care, average number of beds N[NNN.N]	New data element. Changes the record length for the Admitted Patient Service Unit Record.	New data element added to reflect the collection of data relating to hospital-in-the-home beds.

1.2.2. Changes to definitions

The definitional changes to the 2018-19 specifications, compared to 2017-18 are listed in [Table 1.2](#).

Table 1.2 Changes made to 2018-19 definitions compared to 2017-18

Data elements	Details	Rationale
Available bed - overnight-stay admitted care, average number of beds N[N(7).N]	Format change	Format change to reflect the new maximum character length.
Specialised mental health service - target population group, code N	Technical property update	Property data element has been updated
State or Territory Government - mental health services grants to non-government organisations by non-health departments, total Australian currency N[N(8)]	Changes to Relational attributes	Relationships to Implementation in Data Set Specifications reduced.
Establishment - Local Hospital Network identifier, code NNN	Link to reference document removed	Link to the Administrator National Health Funding Pool website removed.

1.3. Reporting statistical units

The statistical units in the MHE NMDS are *Specialised Mental Health Services* METeOR identifier [268984](#)). These are the:

- specialised mental health components of the state and territory health authorities, and of regions within states and territories;
- specialised mental health service organisations;
- hospitals or service unit clusters;
- service units; and
- specialised mental health services provided by private hospitals, and non-government residential service units in receipt of state or territory government funding.

In general, states and territories determine the organisational units that will report as *regions*, *organisations*, and *service units* for this NMDS.

Only those specialised mental health services provided by private hospitals and non government residential mental health services that receive state or territory government funding are included as service units for this NMDS.

Ambulatory services managed by non-government organisations (NGOs) are not defined as statistical units for this NMDS.

The following sections provide more information on each of the statistical units and reporting levels used in the MHE NMDS.

1.3.1. State or territory

This level refers to the state or territory and should be reported using the *State/Territory identifier* data element.

1.3.2. Region

The region refers to an administrative concept not a geographical one. States and territories may have one or more regions into which the state or territory is divided and to which its mental health service organisations belong.

Region would be reported using the *Region identifier* (RegId) data element. In the smaller states or in the territories there may only be one or no region. In these cases, the *Region identifier* is to be reported as '00' and the *Region name* (RegName) would repeat the name of the state or territory.

1.3.3. Organisation

The organisation is defined according to the Object class *Specialised mental health service organisation* (METeOR identifier [286449](#)) and reported using the *Organisation Identifier* (OrgId) data element. An organisation is a separately constituted specialised mental health service that is responsible for the clinical governance, administration and financial management of service units providing specialised mental health care. An organisation

may consist of one or more service units based in different locations and providing services in the admitted patient, residential and ambulatory settings. For example, a mental health service organisation may consist of several hospitals or two or more community centres. Where the mental health service organisation consists of multiple service units, those units can be considered to be components of the same organisation where they:

- Operate under a common clinical governance arrangement;
- Aim to work together as interlocking services that provide integrated, coordinated care to consumers across all mental health service settings; and
- Share clinical records or, in the case where there is more than one physical clinical record for each patient, staff may access (if required) the information contained in all of the physical records held by the organisation for that patient.

For most states and territories, the mental health service organisation is equivalent to the Area or District Mental Health Service. These are usually organised to provide the full range of admitted patient, residential and ambulatory services to a given catchment population. However, the term may also be used to refer to health care organisations which provide only one type of mental health service (for example, acute admitted patient care) or which serve a specialised or state-wide function.

1.3.4. Hospital or service unit cluster

A specialised mental health service organisation may consist of one or more clusters of service units providing services in admitted patient, residential and ambulatory settings. For example, a specialised mental health service organisation may consist of several hospitals (clusters of admitted patient service units) and/or two or more ambulatory or residential service clusters (for example, a cluster of child and adolescent ambulatory service units, and a cluster of aged residential service units).

To allow service units to be reported individually, but still to be identified as part of a hospital (for the admitted patient service setting), or as part of another type of cluster (for example, other cluster type for ambulatory or residential service setting), a separate reporting level has been created.

- 'Hospital' is for admitted patient service units, and
- 'Service unit cluster' is for ambulatory service units and residential service units.

Ambulatory or residential service units will not necessarily belong to a 'cluster'. However, for some ambulatory service units, the cluster the service unit belongs to may be a hospital that contains both admitted patient and ambulatory service units. In this instance, the *Service unit cluster identifier* for the ambulatory service unit would be the *Hospital identifier*. Other groups of ambulatory and residential service units could also be usefully reported as clusters. For example, clusters may exist of groups of residential services for aged persons, or groups of ambulatory service units in particular geographical areas.

Each hospital reported to the Public Hospital Establishments NMDS, with an inpatient unit in scope as specialised mental health, must be reported as a *hospital* for the purposes of the MHE NMDS.

1.3.5. Specialised mental health service units

The reporting of service units specified in this section relates to the minimum reporting that is required for NMDS purposes, defined on the basis of MHE NMDS reporting requirements. States and territories are free to report more service units than this. For example, if a hospital had two older persons acute admitted patient service units, these only need to be reported as one combined older persons acute admitted patient service unit, but could be reported as two separate service units if desired. However, identification of service units should not combine target populations—there is no code available to identify ‘mixed’ target populations. Therefore, where a service delivery outlet provides discrete and specifically funded programs for multiple target populations, each of these should be identified as a separate service unit.

1.3.5.1. Admitted patient setting

For the admitted patient setting, data are to be reported by target population and program type. For example, if a hospital had separate wards/programs for child and adolescent, youth, older person, general adult and forensic there would be a separate service unit reported for each. Additionally, if there are acute and other program types, that would require separate service units to be reported (that is, defined by the program type as well as the target population). For example, an older persons acute unit would be reported separately from an older persons unit providing rehabilitation or extended care. Organisations can, however, report multiple service units with the same target population and program type, if the distinction between the units is known to the organisation and expected to be separately identifiable across a number of years.

1.3.5.2. Ambulatory service setting

For the ambulatory service setting, the service unit is equivalent to the organisation’s ambulatory services as a whole. However, the data element *Target population* should be used to distinguish between general adult, child and adolescent, youth, older person and forensic services. An organisation may choose to report a number of separate ambulatory service units with the same target population, however this is not compulsory.

1.3.5.3. Residential service setting

For the residential service setting, as a minimum, 24-hour staffed residential services that employ mental health trained staff on-site 24 hours per day and other services with less intensive staffing (but mental health trained staff on-site for a minimum of 6 hours a day and at least 50 hours per week) should be defined as separate service units. This applies to both government-operated residential services and government-funded residential services operated by non-government organisations. In addition, the data element *Target population* should be used to distinguish between general adult, child and adolescent, youth, older person and forensic services.

1.3.6. Sector

Sector is not considered part of the identifier. Within this NMDS, sector is an attribute of ambulatory and residential service units. Sector is an attribute of the ‘Hospital’ table for admitted patient service units.

1.3.7. Statistical unit identifiers

The reporting of service entities aims to create relationships between the mental health NMDSs, and where possible, the National Outcomes and Casemix Collection (NOCC), Public Hospital Establishments (PHE) NMDS and Admitted Patient Care (APC) NMDS (see [Table 1.3](#)).

The identifiers for the MHE NMDS are:

- State or territory (1 character) (use *State/Territory identifier*)
- Region (2 characters) (use *Region identifier*)
- Specialised mental health service organisation (4 characters)
- Hospital or service unit cluster (5 characters)
- Service unit (6 characters)

Identifiers should be assigned as follows:

- *State/Territory identifier*: as per *National health data dictionary* codes;
- *Region identifier*: at the discretion of each state or territory as no national code set is available;
- *Organisation identifier*: at the discretion of each state or territory as no national code set is available;
- *Hospital identifier*: the same as used in the PHE NMDS where physically separate hospitals have been distinguished; where multiple hospitals have been reported as a single establishment, new identifiers will be needed to distinguish these hospitals;
- *Service unit cluster identifier*: at the discretion of each state or territory as no national code set is available;
- *Admitted patient service unit identifier*: at the discretion of each state or territory as no national code set is available;
- *Ambulatory service unit identifier*: the same as those used in the Community Mental Health Care (CMHC) NMDS;
- *Residential service unit identifier*: the same as those used in the Residential Mental Health Care (RMHC) NMDS.

Table 1.3 Reporting requirements for mental health and related NMDSs

Identifier element names	METeOR identifier	Mental Health Establishments NMDS	Residential mental health care NMDS	Mental health establishments NMDS	Public hospital establishments NMDS	Admitted patient care NMDS
Australian State or Territory identifier	269941	Yes	Yes	Yes	Yes	Yes
Region identifier	269940	Yes	Yes	Yes	Yes	Yes

Specialised mental health service organisation identifier	404186	Yes	Yes	Yes	No	No
Hospital/ Service unit cluster identifier	404239 (MHE) / 404858 (MHE, MHE & RMHC)	Yes	Yes	Yes	Yes	Yes
Service unit identifier	404390 (MHE) / 404829 (MHE, MHE) / 404837 (MHE, RMHC)	Yes	Yes	Yes	No	No

The use of identical identifiers between the various Mental Health Datasets is tested via the Mental Health Establishments Skeleton files, handled by the MDS Validator.

An additional identifier is now included in the MHE NMDS 2014–15 and subsequent MHE NMDSs: the Local hospital network identifier (METeOR identifier [680985](#)). This data element is reported at the service unit level and is not part of the identifier string.

1.3.8. Consistency of identifiers across reference periods

Where no major service reorganisations have occurred, the region, organisation, service unit cluster and service unit identifiers (*RegId*, *OrgId*, *ClusId*, *AdmId*, *AmbId*, *ResId*) used by a jurisdiction should be preferably identical to the previous year. However, given that all jurisdictions have committed to aligning ID numbers between the different NMDS's, changes in ID numbers due to this process will be accepted, as will be the case for those jurisdictions that have undergone significant reorganisation of service delivery that warrant new service entity identifiers. In these cases, jurisdictions should provide a supplementary mapping document that clearly illustrates the changes in ID numbers between collection periods, at all levels.

Region, organisation, hospital, cluster and service unit name changes are acceptable, especially if the new name is more locally relevant. These will be identified as a change in the MDS Validator, however will not affect the generation of the historical trends reports.

1.4. Data model of the MHE Extract

[Fig. 1.1](#) provides an abbreviated overview of the structure of the data to be reported. Information is provided at each level: State/Territory; Region; Organisation; Hospital/Service unit cluster; and Service unit (Admitted patient services, Residential services and Ambulatory services). Each level has a unique set of attributes which comprise the NMDS data elements and additional supplementary information.

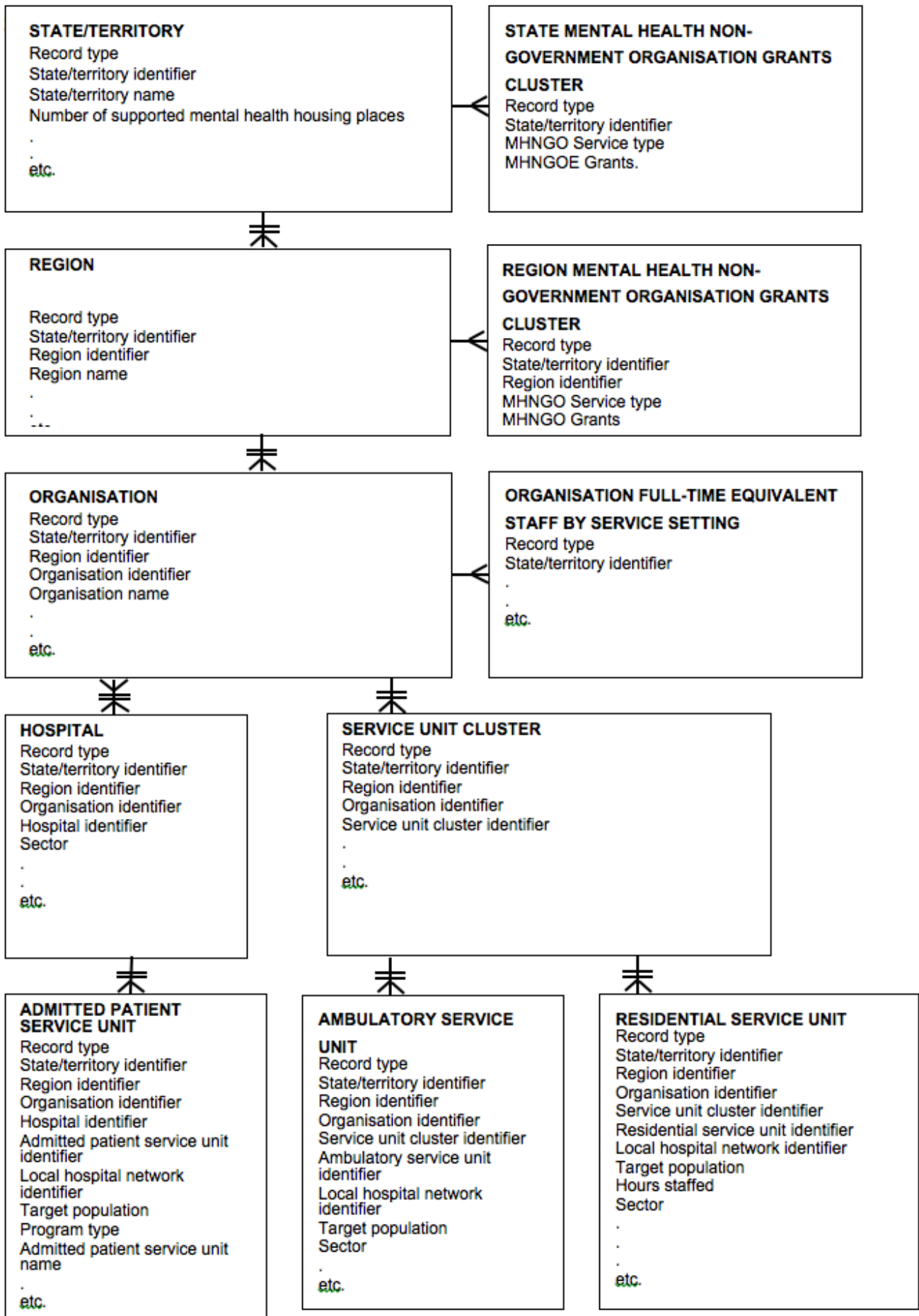


Fig. 1.1 Overview of Data model underlying the Mental Health Establishments NMDS data extract

1.5. Data integrity

For cases of missing data (that is, unknown, not stated or not available):

- For **Numeric [Num] fields**, the data should be reported as zero, using leading zeros when necessary to pad out the field to the required length. The principle here is that all numeric fields require a valid value.
- For **Text [Char] fields**, the data should be space-filled to the required length. For single character fields where a 'missing/not stated' value has been specified for a particular data element (for example, '9' has been specified for missing data), use the stated value for 'missing/not stated' rather than simply space filling.

Values in **Date [Date] fields** must be recorded in compliance with the standard format used across the *National health data dictionary*; specifically, dates must be of fixed 8 column width in the format DDMMYYYY, with leading zeros used when necessary to pad out a value. For instance, 13 March 2019 would appear as 13032019.

Values in **Numeric [Num] fields** must be zero-filled and right-justified. These should consist only of the numerals 0 to 9 and the decimal (".") point if applicable to the data element.

Note: Fields defined as 'Numeric' are those that have numeric properties—that is, the values, for example, can be added or subtracted in a manner that is valid. Where a field uses numeric characters that do not have these properties (for example, the use of numbers for *Patient identifier*), the field is defined as 'Character'.

Values in **Character [Char] fields** must be left justified and space-filled. These should consist of any of the printable ASCII character set (that is, excluding control codes such as newline, bell and linefeed).

1.6. Data set specification (DSS)

As noted earlier, the proposed file structure for the transmission of data from jurisdictions to the AIHW is a single Fixed Format data file. The following tables specify the order in which the data items should be provided to the AIHW.

The extract format consists of a set of hierarchically ordered *Data records*, of which there are twelve types (see [Table 1.4](#)).

In each extract file for any given period, the *Data records* must be preceded by a single *File Header Record* having the structure outlined in [Table 1.5](#).

All records presented in the extract file should be grouped in the following order: Header Record; State/Territory details records; Region details records; Organisation details records; Hospital/Service unit cluster details records; and Service unit details records.

With the exception of Region, Organisation and Service unit cluster details records, all *Data records* should include the following elements in the order shown:

- Record type
- Establishment identifier (comprising: *State/Territory identifier*; *Region identifier*; *Organisation identifier*; *Hospital identifier/Service unit cluster identifier*; and *Service unit identifier*)
- Specific data in the format specified for the given record type

The order of fields in a record must be the same as the order they are listed in the Record Layouts specified below. Field values should be formatted as specified in the Record Layouts.

The first field in each record must be *Record Type*. Valid values for *Record Type* are shown in [Table 1.4](#).

Table 1.4 Valid values for Record Type

Record Type	Description
HR	File Header Record
ST	State/Territory Details
STNGOE	State-level Non-Government Organisation grants
REG	Region details records
RENGOE	Region-level Non-Government Organisation grants
ORG	Organisation details records
FTEORG	Organisation Full-time Equivalent Staff by Setting/Target Pop
HOSP	Hospital Details
CLUS	Service unit cluster details records
ADMI	Admitted Patient Service Unit Details
AMBU	Ambulatory Service Unit Details
RESI	Residential Service Unit Details

1.6.1. File header record

The first record of the extract file must be a File Header Record (*Record Type* = 'HR'), and it must be the only such record in the file.

The File Header Record is a quality control mechanism, which uniquely identifies each file that is sent to the AIHW (that is, who sent the file, what date the file was sent, batch number of file, etc). The information contained in the header fields will be checked against the actual details of the file to ensure that the file received has not been corrupted.

The layout of the File Header Record is shown in [Table 1.5](#).

Table 1.5 Record Layout for File Header Record within the data extract

Data Element (Field Name)	Type [Length]	Start	METeOR Identifier	Notes / Values
Record Type (RecType)	Char[8]	1	—	Value = <i>HR</i>
State/Territory Identifier (State) [1]	Char[1]	9	269941	<ul style="list-style-type: none"> 1: New South Wales 2: Victoria 3: Queensland 4: South Australia 5: Western Australia 6: Tasmania 7: Northern Territory 8: Australian Capital Territory
Batch Number (BatchNo)	Char[9]	10	—	Represents the YYYNNNNN component of the extract file name.
Report Period Start Date (RepStart)	Date[8]	19	—	Report period start date
Report Period End Date (RepEnd)	Date[8]	27	—	Report period end date
Data File Generation Date (GenDt)	Date[8]	35	—	Data file generation date
Data File Type (FileType)	Char[3]	43	—	Value = <i>MHE</i>
MHE Specification Version Number (SpecVer)	Char[5]	46	—	Value = <i>02.30</i>

Record length = 50

Notes

[1] (Meteor includes code 9, but that is not applicable to the MHE NMDS)

1.6.2. State/Territory data record

The extract format for the *Data records* is specified in detail in tables [Table 1.5](#) to [Table 1.16](#). The order of fields in each record must be the same as the order they are shown below. Field values should be formatted as specified.

Table 1.6 Data record layout - State/Territory details

Data Element (Field Name)	Type [Length]	Start	METeOR Identifier	Notes / Values
Record Type (RecType)	Char[8]	1	—	Value = <i>ST</i>
State/Territory Identifier (State) ^[2]	Char[1]	9	269941	1: New South Wales 2: Victoria 3: Queensland 4: South Australia 5: Western Australia 6: Tasmania 7: Northern Territory 8: Australian Capital Territory
State/Territory Name (StateName)	Char[28]	10	—	Name used to identify the State/Territory
Number of Supported Mental Health Housing Places (NHousePlaces)	Number[6]	38	390929	N(6)
NGO Grants - from Non-Health Departments (NgoOtherDepts)	Number[9]	44	685355	Australian dollars. Rounded to the nearest whole dollar. N[N(8)]
Revenue - Department of Veterans' Affairs (RevDVA)	Number[9]	53	377992	Australian dollars. Rounded to the nearest whole dollar. N[N(8)]
Revenue - Recoveries (RevRecov)	Number[9]	62	288685	Australian dollars. Rounded to the nearest whole dollar. N[N(8)]
Revenue - State or Territory Health Authority (RevStateHealth)	Number[9]	71	288965	Australian dollars. Rounded to the nearest whole dollar. N[N(8)]

Data Element (Field Name)	Type [Length]	Start	METeOR Identifier	Notes / Values
Revenue - Other Commonwealth (RevCwlthOther)	Number[9]	80	288031	Australian dollars. Rounded to the nearest whole dollar. N[N(8)]
Revenue - Patients (RevPatients)	Number[9]	89	290583	Australian dollars. Rounded to the nearest whole dollar. N[N(8)]
Revenue - Other (RevOther)	Number[9]	98	288071	Australian dollars. Rounded to the nearest whole dollar. N[N(8)]
Revenue - State/Territory Other (RevStateOther)	Number[9]	107	288075	Australian dollars. Rounded to the nearest whole dollar. N[N(8)]
Expenditure Not Elsewhere Reported - Academic Positions (ExpNerAcademic)	Number[9]	116	290151	Australian dollars. Rounded to the nearest whole dollar. N[N(8)]
Expenditure Not Elsewhere Reported - Education and Training (ExpNerTraining)	Number[9]	125	290149	Australian dollars. Rounded to the nearest whole dollar. N[N(8)]
Expenditure Not Elsewhere Reported - Insurance (ExpNerInsur)	Number[9]	134	290164	Australian dollars. Rounded to the nearest whole dollar. N[N(8)]
Expenditure Not Elsewhere Reported - Mental Health Act Regulation or related legislation (ExpNerMHAct)	Number[9]	143	376828	Australian dollars. Rounded to the nearest whole dollar. N[N(8)]
Expenditure Not Elsewhere Reported - Mental Health Promotion (ExpNerPromo)	Number[9]	152	290156	Australian dollars. Rounded to the nearest whole dollar. N[N(8)]
Expenditure Not Elsewhere Reported - Mental Health Research (ExpNerResearch)	Number[9]	161	290153	Australian dollars. Rounded to the nearest whole dollar. N[N(8)]
Expenditure Not Elsewhere Reported - Patient Transport Services (ExpNerTransp)	Number[9]	170	290183	Australian dollars. Rounded to the nearest whole dollar. N[N(8)]
Expenditure Not Elsewhere Reported - Program Administration (ExpNerProgAdmin)	Number[9]	179	290145	Australian dollars. Rounded to the nearest whole dollar. N[N(8)]
Expenditure Not Elsewhere Reported - Property Leasing Costs (ExpNerPropLease)	Number[9]	188	290185	Australian dollars. Rounded to the nearest whole dollar. N[N(8)]

Data Element (Field Name)	Type [Length]	Start	METeOR Identifier	Notes / Values
Expenditure Not Elsewhere Reported - Service Development (ExpNerServDev)	Number[9]	197	373040	Australian dollars. Rounded to the nearest whole dollar. N[N(8)]
Expenditure Not Elsewhere Reported - Superannuation (ExpNerSuper)	Number[9]	206	290158	Australian dollars. Rounded to the nearest whole dollar. N[N(8)]
Expenditure Not Elsewhere Reported - Workers Compensation (ExpNerWorkComp)	Number[9]	215	290160	Australian dollars. Rounded to the nearest whole dollar. N[N(8)]
Expenditure Not Elsewhere Reported - Other Indirect Expenditure (ExpNerOther)	Number[9]	224	290187	Australian dollars. Rounded to the nearest whole dollar. N[N(8)]

Record length = 232

Notes

[2] (Meteor includes code 9, but that is not applicable to the MHE NMDS)

1.6.3. State MH NGOE Grants data record

Table 1.7 Data record layout - State MH NGOE Grants

Data Element (Field Name)	Type [Length]	Start	METeOR Identifier	Notes / Values
Record Type (RecType)	Char[8]	1	–	Value = STNGOE
State/Territory Identifier (State) [3]	Char[1]	9	269941	<ul style="list-style-type: none"> 1: New South Wales 2: Victoria 3: Queensland 4: South Australia 5: Western Australia 6: Tasmania 7: Northern Territory 8: Australian Capital Territory

Data Element (Field Name)	Type [Length]	Start	METeOR Identifier	Notes / Values
Mental health non-governmental organisation service type (MHNGOServType)	Char[2]	10	567352	<p>01: Counselling – face-to-face</p> <p>02: Counselling, support, information and referral – telephone</p> <p>03: Counselling, support, information and referral – online</p> <p>04: Self-help – online</p> <p>05: Group support activities</p> <p>06: Mutual support and self-help</p> <p>07: Staffed residential services</p> <p>08: Personalised support – linked to housing</p> <p>09: Personalised support – other</p> <p>10: Family and carer support</p> <p>11: Individual advocacy</p> <p>12: Care coordination</p> <p>13: Service integration infrastructure</p> <p>14: Education, employment and training</p> <p>15: Sector development and representation</p> <p>16: Mental health promotion</p> <p>17: Mental illness prevention</p> <p>88: Other and unspecified services</p>

Data Element (Field Name)	Type [Length]	Start	METeOR Identifier	Notes / Values
Mental health non-governmental organisation grants (MHNGOEGrants)	Number[9]	12	567363	The dollar amount of grants provided to an NGO.

Record length = 20

Notes

[3] (Meteor includes code 9, but that is not applicable to the MHE NMDS)

1.6.4. Region data record

Table 1.8 Data record layout - Region details

Data Element (Field Name)	Type [Length]	Start	METeOR Identifier	Notes / Values
Record Type (RecType)	Char[8]	1	—	Value = REG
State/Territory Identifier (State) [4]	Char[1]	9	269941	<ul style="list-style-type: none"> 1: New South Wales 2: Victoria 3: Queensland 4: South Australia 5: Western Australia 6: Tasmania 7: Northern Territory 8: Australian Capital Territory
Region Identifier (RegId)	Char[2]	10	269940	AA: Region (values as specified by individual jurisdiction). Identifiers used in this collection should map to the identifiers used in data for the NMDSs for Community Mental Health Care and Residential Mental Health Care.
Region Name (RegName)	Char[60]	12	407187	Common name used to identify the Region.

Data Element (Field Name)	Type [Length]	Start	METeOR Identifier	Notes / Values
Revenue - Department of Veterans' Affairs (RevDVA)	Number[9]	72	377992	Australian dollars. Rounded to the nearest whole dollar. N[N(8)]
Revenue - Recoveries (RevRecov)	Number[9]	81	288685	Australian dollars. Rounded to the nearest whole dollar. N[N(8)]
Revenue - State or Territory Health Authority (RevStateHealth)	Number[9]	90	288965	Australian dollars. Rounded to the nearest whole dollar. N[N(8)]
Revenue - Other Commonwealth (RevCwlthOther)	Number[9]	99	288031	Australian dollars. Rounded to the nearest whole dollar. N[N(8)]
Revenue - Patients (RevPatients)	Number[9]	108	290583	Australian dollars. Rounded to the nearest whole dollar. N[N(8)]
Revenue - Other (RevOther)	Number[9]	117	288071	Australian dollars. Rounded to the nearest whole dollar. N[N(8)]
Revenue - State/Territory Other (RevStateOther)	Number[9]	126	288075	Australian dollars. Rounded to the nearest whole dollar. N[N(8)]
Expenditure Not Elsewhere Reported - Academic Positions (ExpNerAcademic)	Number[9]	135	290151	Australian dollars. Rounded to the nearest whole dollar. N[N(8)]
Expenditure Not Elsewhere Reported - Education and Training (ExpNerTraining)	Number[9]	144	290149	Australian dollars. Rounded to the nearest whole dollar. N[N(8)]
Expenditure Not Elsewhere Reported - Insurance (ExpNerInsur)	Number[9]	153	290164	Australian dollars. Rounded to the nearest whole dollar. N[N(8)]
Expenditure Not Elsewhere Reported - Mental Health Act Regulation or related legislation (ExpNerMHAct)	Number[9]	162	376828	Australian dollars. Rounded to the nearest whole dollar. N[N(8)]
Expenditure Not Elsewhere Reported - Mental Health Promotion (ExpNerPromo)	Number[9]	171	290156	Australian dollars. Rounded to the nearest whole dollar. N[N(8)]
Expenditure Not Elsewhere Reported - Mental Health Research (ExpNerResearch)	Number[9]	180	290153	Australian dollars. Rounded to the nearest whole dollar. N[N(8)]

Data Element (Field Name)	Type [Length]	Start	METeOR Identifier	Notes / Values
Expenditure Not Elsewhere Reported - Patient Transport Services (ExpNerTransp)	Number[9]	189	290183	Australian dollars. Rounded to the nearest whole dollar. N[N(8)]
Expenditure Not Elsewhere Reported - Program Administration (ExpNerProgAdmin)	Number[9]	198	290145	Australian dollars. Rounded to the nearest whole dollar. N[N(8)]
Expenditure Not Elsewhere Reported - Property Leasing Costs (ExpNerPropLease)	Number[9]	207	290185	Australian dollars. Rounded to the nearest whole dollar. N[N(8)]
Expenditure Not Elsewhere Reported - Service Development (ExpNerServDev)	Number[9]	216	373040	Australian dollars. Rounded to the nearest whole dollar. N[N(8)]
Expenditure Not Elsewhere Reported - Superannuation (ExpNerSuper)	Number[9]	225	290158	Australian dollars. Rounded to the nearest whole dollar. N[N(8)]
Expenditure Not Elsewhere Reported - Support Services (ExpNerSuppServ)	Number[9]	234	290147	Australian dollars. Rounded to the nearest whole dollar. N[N(8)]
Expenditure Not Elsewhere Reported - Workers Compensation (ExpNerWorkComp)	Number[9]	243	290160	Australian dollars. Rounded to the nearest whole dollar. N[N(8)]
Expenditure Not Elsewhere Reported - Other Indirect Expenditure (ExpNerOther)	Number[9]	252	290187	Australian dollars. Rounded to the nearest whole dollar. N[N(8)]

Record length = 260

Notes

[4] (Meteor includes code 9, but that is not applicable to the MHE NMDS)

1.6.5. Region MH NGOE Grants data record

Table 1.9 Data record layout - Region MH NGOE Grants

Data Element (Field Name)	Type [Length]	Start	METeOR Identifier	Notes / Values
Record Type (RecType)	Char[8]	1	—	Value = REGNGOE

Data Element (Field Name)	Type [Length]	Start	METeOR Identifier	Notes / Values
State/Territory Identifier (State) ^[5]	Char[1]	9	269941	<ul style="list-style-type: none"> 1: New South Wales 2: Victoria 3: Queensland 4: South Australia 5: Western Australia 6: Tasmania 7: Northern Territory 8: Australian Capital Territory
Region Identifier (RegId)	Char[2]	10	269940	AA: Region (values as specified by individual jurisdiction). Identifiers used in this collection should map to the identifiers used in data for the NMDs for Community Mental Health Care and Residential Mental Health Care.

Data Element (Field Name)	Type [Length]	Start	METeOR Identifier	Notes / Values
Mental health non-governmental organisation service type (MHNGOServType)	Char[2]	12	567352	<ul style="list-style-type: none"> 01: Counselling – face-to-face 02: Counselling, support, information and referral – telephone 03: Counselling, support, information and referral – online 04: Self-help – online 05: Group support activities 06: Mutual support and self-help 07: Staffed residential services 08: Personalised support – linked to housing 09: Personalised support – other 10: Family and carer support 11: Individual advocacy 12: Care coordination 13: Service integration infrastructure 14: Education, employment and training 15: Sector development and representation 16: Mental health promotion 17: Mental illness prevention 88: Other and unspecified services

Data Element (Field Name)	Type [Length]	Start	METeOR Identifier	Notes / Values
Mental health non-governmental organisation grants (MHNGOEGrants)	Number[9]	14	567363	The dollar amount of grants provided to an NGO.

Record length = 22

Notes

[5] (Meteor includes code 9, but that is not applicable to the MHE NMDS)

1.6.6. Organisation data record

Table 1.10 Data record layout - Organisation details

Data Element (Field Name)	Type [Length]	Start	METeOR Identifier	Notes / Values
Record Type (RecType)	Char[8]	1	—	Value = <i>ORG</i>
State/Territory Identifier (State) ^[6]	Char[1]	9	269941	<ul style="list-style-type: none"> 1: New South Wales 2: Victoria 3: Queensland 4: South Australia 5: Western Australia 6: Tasmania 7: Northern Territory 8: Australian Capital Territory
Region Identifier (RegId)	Char[2]	10	269940	AA: Region (values as specified by individual jurisdiction). Identifiers used in this collection should map to the identifiers used in data for the NMDSs for Community Mental Health Care and Residential Mental Health Care.

Data Element (Field Name)	Type [Length]	Start	METeOR Identifier	Notes / Values
Organisation Identifier (OrgId)	Char[4]	12	404186	Identifiers used in this collection should map to the identifiers used in data for the NMDSs for Community Mental Health Care and Residential Mental Health Care.
Organisation Name (OrgName)	Char[100]	16	405767	Common name used to identify the Organisation
Revenue - Department of Veterans' Affairs (RevDVA)	Number[9]	116	377992	Australian dollars. Rounded to the nearest whole dollar. N[N(8)]
Revenue - Recoveries (RevRecov)	Number[9]	125	288685	Australian dollars. Rounded to the nearest whole dollar. N[N(8)]
Revenue - State or Territory Health Authority (RevStateHealth)	Number[9]	134	288965	Australian dollars. Rounded to the nearest whole dollar. N[N(8)]
Revenue - Other Commonwealth (RevCwlthOther)	Number[9]	143	288031	Australian dollars. Rounded to the nearest whole dollar. N[N(8)]
Revenue - Patients (RevPatients)	Number[9]	152	290583	Australian dollars. Rounded to the nearest whole dollar. N[N(8)]
Revenue - Other (RevOther)	Number[9]	161	288071	Australian dollars. Rounded to the nearest whole dollar. N[N(8)]
Revenue - State/Territory Other (RevStateOther)	Number[9]	170	288075	Australian dollars. Rounded to the nearest whole dollar. N[N(8)]
Depreciation (Deprec)	Number[9]	179	270279	Australian dollars. Rounded to the nearest whole dollar. N[N(8)]
Non-Salary Recurrent Expenditure - Administrative Expenses (ExpNonSalAdmin)	Number[9]	188	270107	Australian dollars. Rounded to the nearest whole dollar. N[N(8)]
Non-Salary Recurrent Expenditure - Domestic Services (ExpNonSalDomest)	Number[9]	197	270283	Australian dollars. Rounded to the nearest whole dollar. N[N(8)]
Non-Salary Recurrent Expenditure - Drug Supplies (ExpNonSalDrug)	Number[9]	206	270282	Australian dollars. Rounded to the nearest whole dollar. N[N(8)]
Non-Salary Recurrent Expenditure - Food Supplies (ExpNonSalFood)	Number[9]	215	270284	Australian dollars. Rounded to the nearest whole dollar. N[N(8)]

Data Element (Field Name)	Type [Length]	Start	METeOR Identifier	Notes / Values
Non-Salary Recurrent Expenditure - Interest Payments (ExpNonSalInterest)	Number[9]	224	270186	Australian dollars. Rounded to the nearest whole dollar. N[N(8)]
Non-Salary Recurrent Expenditure - Medical and Surgical Supplies (ExpNonSalMedSuppl)	Number[9]	233	270358	Australian dollars. Rounded to the nearest whole dollar. N[N(8)]
Non-Salary Recurrent Expenditure - Patient Transport (ExpNonSalTransp)	Number[9]	242	270048	Australian dollars. Rounded to the nearest whole dollar. N[N(8)]
Non-Salary Recurrent Expenditure - Payments to Visiting Medical Officers (ExpNonSalVMO)	Number[9]	251	270049	Australian dollars. Rounded to the nearest whole dollar. N[N(8)]
Non-Salary Recurrent Expenditure - Repairs and Maintenance (ExpNonSalRepairs)	Number[9]	260	269970	Australian dollars. Rounded to the nearest whole dollar. N[N(8)]
Non-Salary Recurrent Expenditure - Superannuation (ExpNonSalSuper)	Number[9]	269	270371	Australian dollars. Rounded to the nearest whole dollar. N[N(8)]
Non-Salary Recurrent Expenditure - Other Recurrent Expenditure (ExpNonSalOther)	Number[9]	278	270126	Australian dollars. Rounded to the nearest whole dollar. N[N(8)]
Salaries and Wages - Consultant Psychiatrists and Psychiatrists (ExpSalCnsltPsych)	Number[9]	287	288767	Australian dollars. Rounded to the nearest whole dollar. N[N(8)]
Salaries and Wages - Psychiatry Registrars and Trainees (ExpSalPsyReg)	Number[9]	296	288774	Australian dollars. Rounded to the nearest whole dollar. N[N(8)]
Salaries and Wages - Other Medical Officers (ExpSalMedOther)	Number[9]	305	288776	Australian dollars. Rounded to the nearest whole dollar. N[N(8)]
Salaries and Wages - Registered Nurses (ExpSalNursesReg)	Number[9]	314	270269	Australian dollars. Rounded to the nearest whole dollar. N[N(8)]
Salaries and Wages - Enrolled Nurses (ExpSalNursesEnrl)	Number[9]	323	270270	Australian dollars. Rounded to the nearest whole dollar. N[N(8)]
Salaries and Wages - Occupational Therapists (ExpSalOT)	Number[9]	332	288778	Australian dollars. Rounded to the nearest whole dollar. N[N(8)]
Salaries and Wages - Social Workers (ExpSalSocialWk)	Number[9]	341	288780	Australian dollars. Rounded to the nearest whole dollar. N[N(8)]

Data Element (Field Name)	Type [Length]	Start	METeOR Identifier	Notes / Values
Salaries and Wages - Psychologists (ExpSalPsychol)	Number[9]	350	288784	Australian dollars. Rounded to the nearest whole dollar. N[N(8)]
Salaries and Wages - Other Diagnostic and Health Professionals (ExpSalDHPOther)	Number[9]	359	288786	Australian dollars. Rounded to the nearest whole dollar. N[N(8)]
Salaries and Wages - Administrative and Clerical Staff (ExpSalAdmin)	Number[9]	368	270275	Australian dollars. Rounded to the nearest whole dollar. N[N(8)]
Salaries and Wages - Domestic and Other Staff (ExpSalDomest)	Number[9]	377	270276	Australian dollars. Rounded to the nearest whole dollar. N[N(8)]
Salaries and Wages - Mental Health Carer Workers (ExpSalCarerWrkr)	Number[9]	386	451432	Australian dollars. Rounded to the nearest whole dollar. N[N(8)]
Salaries and Wages - Mental Health Consumer Workers (ExpSalConsrWrkr)	Number[9]	395	451428	Australian dollars. Rounded to the nearest whole dollar. N[N(8)]
Salaries and Wages - Other Personal Care Staff (ExpSalPCare)	Number[9]	404	270273	Australian dollars. Rounded to the nearest whole dollar. N[N(8)]
Full-Time Equivalent Staff - Consultant Psychiatrists and Psychiatrists (FteCnsltPsych)	Number[7]	413	—	Total number of full-time equivalent units. NNNN.NN (Based on MeteorID: 287509)
Full-Time Equivalent Staff - Psychiatry Registrars and Trainees (FtePsyReg)	Number[7]	420	—	Total number of full-time equivalent units. NNNN.NN (Based on MeteorID: 287529)
Full-Time Equivalent Staff - Other Medical Officers (FteMedOther)	Number[7]	427	—	Total number of full-time equivalent units. NNNN.NN (Based on MeteorID: 287531)
Full-Time Equivalent Staff - Registered Nurses (FteNursesReg)	Number[7]	434	—	Total number of full-time equivalent units. NNNN.NN (Based on MeteorID: 270500)
Full-Time Equivalent Staff - Enrolled Nurses (FteNursesEnrl)	Number[7]	441	—	Total number of full-time equivalent units. NNNN.NN (Based on MeteorID: 270497)
Full-Time Equivalent Staff - Occupational Therapists (FteOT)	Number[7]	448	—	Total number of full-time equivalent units. NNNN.NN (Based on MeteorID: 287603)

Data Element (Field Name)	Type [Length]	Start	METeOR Identifier	Notes / Values
Full-Time Equivalent Staff - Social Workers (FteSocialWk)	Number[7]	455	—	Total number of full-time equivalent units. NNNN.NN (Based on MeteorID: 287607)
Full-Time Equivalent Staff - Psychologists (FtePsychol)	Number[7]	462	—	Total number of full-time equivalent units. NNNN.NN (Based on MeteorID: 287609)
Full-Time Equivalent Staff - Other Diagnostic and Health Professionals (FteDHPOther)	Number[7]	469	—	Total number of full-time equivalent units. NNNN.NN (Based on MeteorID: 287611)
Full-Time Equivalent Staff - Administrative and Clerical Staff (FteAdmin)	Number[7]	476	—	Total number of full-time equivalent units. NNNN.NN (Based on MeteorID: 270496)
Full-Time Equivalent Staff - Domestic and Other Staff (FteDomest)	Number[7]	483	—	Total number of full-time equivalent units. NNNN.NN (Based on MeteorID: 270498)
Full-Time Equivalent Staff - Mental Health Carer Workers (FteCarerWrkr)	Number[7]	490	450762	Total number of full-time equivalent units. NNNN.NN
Full-Time Equivalent Staff - Mental Health Consumer Workers (FteConsrWrkr)	Number[7]	497	450821	Total number of full-time equivalent units. NNNN.NN
Full-Time Equivalent Staff - Other Personal Care Staff (FtePCare)	Number[7]	504	—	Total number of full-time equivalent units. NNNN.NN (Based on MeteorID: 270171)
Expenditure Not Elsewhere Reported - Academic Positions (ExpNerAcademic)	Number[9]	511	290151	Australian dollars. Rounded to the nearest whole dollar. N[N(8)]
Expenditure Not Elsewhere Reported - Education and Training (ExpNerTraining)	Number[9]	520	290149	Australian dollars. Rounded to the nearest whole dollar. N[N(8)]
Expenditure Not Elsewhere Reported - Insurance (ExpNerInsur)	Number[9]	529	290164	Australian dollars. Rounded to the nearest whole dollar. N[N(8)]
Expenditure Not Elsewhere Reported - Mental Health Act Regulation or related legislation (ExpNerMHAct)	Number[9]	538	376828	Australian dollars. Rounded to the nearest whole dollar. N[N(8)]
Expenditure Not Elsewhere Reported - Mental Health Promotion (ExpNerPromo)	Number[9]	547	290156	Australian dollars. Rounded to the nearest whole dollar. N[N(8)]

Data Element (Field Name)	Type [Length]	Start	METeOR Identifier	Notes / Values
Expenditure Not Elsewhere Reported - Mental Health Research (ExpNerResearch)	Number[9]	556	290153	Australian dollars. Rounded to the nearest whole dollar. N[N(8)]
Expenditure Not Elsewhere Reported - Patient Transport Services (ExpNerTransp)	Number[9]	565	290183	Australian dollars. Rounded to the nearest whole dollar. N[N(8)]
Expenditure Not Elsewhere Reported - Program Administration (ExpNerProgAdmin)	Number[9]	574	290145	Australian dollars. Rounded to the nearest whole dollar. N[N(8)]
Expenditure Not Elsewhere Reported - Property Leasing Costs (ExpNerPropLease)	Number[9]	583	290185	Australian dollars. Rounded to the nearest whole dollar. N[N(8)]
Expenditure Not Elsewhere Reported - Service Development (ExpNerServDev)	Number[9]	592	373040	Australian dollars. Rounded to the nearest whole dollar. N[N(8)]
Expenditure Not Elsewhere Reported - Superannuation (ExpNerSuper)	Number[9]	601	290158	Australian dollars. Rounded to the nearest whole dollar. N[N(8)]
Expenditure Not Elsewhere Reported - Support Services (ExpNerSuppServ)	Number[9]	610	290147	Australian dollars. Rounded to the nearest whole dollar. N[N(8)]
Expenditure Not Elsewhere Reported - Workers Compensation (ExpNerWorkComp)	Number[9]	619	290160	Australian dollars. Rounded to the nearest whole dollar. N[N(8)]
Expenditure Not Elsewhere Reported - Other Indirect Expenditure (ExpNerOther)	Number[9]	628	290187	Australian dollars. Rounded to the nearest whole dollar. N[N(8)]
Carer Participation Arrangements Indicator - Carer Experience Surveys (CarerSurvey)	Char[1]	637	529231	1: Yes 2: No 9: Not stated/ inadequately described
Carer Participation Arrangements Indicator - Formal Complaints Mechanism (CarerCompl)	Char[1]	638	564666	1: Yes 2: No 9: Not stated/ inadequately described

Data Element (Field Name)	Type [Length]	Start	METeOR Identifier	Notes / Values
Carer Participation Arrangements Indicator - Formal Participation Policy (CarerPolicy)	Char[1]	639	529235	1: Yes 2: No 9: Not stated/ inadequately described
Carer Participation Arrangements Indicator - Regular Discussion Groups (CarerDiscGrp)	Char[1]	640	529237	1: Yes 2: No 9: Not stated/ inadequately described
Carer Representation Arrangements Indicator (CarerRep)	Char[1]	641	529383	1: Yes 2: No 9: Not stated/ inadequately described
Consumer Participation Arrangements Indicator - Consumer Experience Surveys (ConsrSurvey)	Char[1]	642	529170	1: Yes 2: No 9: Not stated/ inadequately described
Consumer Participation Arrangements Indicator - Formal Complaints Mechanism (ConsrCompl)	Char[1]	643	564674	1: Yes 2: No 9: Not stated/ inadequately described
Consumer Participation Arrangements Indicator - Formal Participation Policy (ConsrPolicy)	Char[1]	644	529185	1: Yes 2: No 9: Not stated/ inadequately described

Data Element (Field Name)	Type [Length]	Start	METeOR Identifier	Notes / Values
Consumer Participation Arrangements - Regular Discussion Groups (ConsrDiscGrp)	Char[1]	645	529224	1: Yes 2: No 9: Not stated/ inadequately described
Consumer Representation Arrangements Indicator (ConsrRep)	Char[1]	646	529103	1: Yes 2: No 9: Not stated/ inadequately described

Data Element (Field Name)	Type [Length]	Start	METeOR Identifier	Notes / Values
Consumer Committee Representation Arrangements (CmteeRep)	Char[1]	647	288855	<p>Formal position(s) for consumers exist on the organisation's management</p> <p>1: committee for the appointment of person(s) to represent the interests of consumers.</p> <p>Specific consumer advisory committee(s) exists to advise</p> <p>2: on all relevant mental health services managed by the organisation.</p> <p>Specific consumer advisory committee(s) exists to advise on some but not all relevant mental health services managed by the organisation.</p> <p>3:</p> <p>Consumers participate on a broadly based advisory committee which include a mixture of organisations and groups representing a wide range of interests.</p> <p>4:</p> <p>Consumers are not represented on any advisory committee but are</p> <p>5: encouraged to meet with senior representatives of the organisation as required.</p>

Data Element (Field Name)	Type [Length]	Start	METeOR Identifier	Notes / Values
				6: No specific arrangements exist for consumer participation in planning and evaluation of services.

Record length = 647

Notes

[6] (Meteor includes code 9, but that is not applicable to the MHE NMDS)

1.6.7. Organisation: FTE Staff by Service Setting data record

Table 1.11 Data record layout - Organisation Details: FTE Staff by Service Setting data record

Data Element (Field Name)	Type [Length]	Start	METeOR Identifier	Notes / Values
Record Type (RecType)	Char[8]	1	—	Value = <i>FTEORG</i>
State/Territory Identifier (State) [7]	Char[1]	9	269941	1: New South Wales 2: Victoria 3: Queensland 4: South Australia 5: Western Australia 6: Tasmania 7: Northern Territory 8: Australian Capital Territory
Region Identifier (RegId)	Char[2]	10	269940	AA: Region (values as specified by individual jurisdiction). Identifiers used in this collection should map to the identifiers used in data for the NMDSs for Community Mental Health Care and Residential Mental Health Care.

Data Element (Field Name)	Type [Length]	Start	METeOR Identifier	Notes / Values
Organisation Identifier (OrgId)	Char[4]	12	404186	Identifiers used in this collection should map to the identifiers used in data for the NMDs for Community Mental Health Care and Residential Mental Health Care.
Service Setting (Setting)	Char[1]	16	493347	<ul style="list-style-type: none"> 1: Admitted patient care setting 2: Residential care setting 3: Ambulatory care setting 4: Organisational overhead setting
Target Population (TargetPop) ^[8]	Char[1]	17	682403	<ul style="list-style-type: none"> 1: Child and adolescent 2: Older person 3: Forensic 4: General 5: Youth 7: Not applicable
Full-Time Equivalent Staff - Salaried Medical Officers (FteMed)	Number[7]	18	—	Total number of full-time equivalent units. NNNN.NN (Based on MeteorID: 270494)
Full-Time Equivalent Staff - Nurses (FteNurses)	Number[7]	25	426703	Total number of full-time equivalent units. NNNN.NN
Full-Time Equivalent Staff - Diagnostic and Health Professionals (FteDHP)	Number[7]	32	—	Total number of full-time equivalent units. NNNN.NN (Based on MeteorID: 270495)
Full-Time Equivalent Staff - Administrative and Clerical Staff (FteAdmin)	Number[7]	39	—	Total number of full-time equivalent units. NNNN.NN (Based on MeteorID: 270496)
Full-Time Equivalent Staff - Domestic and Other Staff (FteDomest)	Number[7]	46	—	Total number of full-time equivalent units. NNNN.NN (Based on MeteorID: 270498)

Data Element (Field Name)	Type [Length]	Start	METeOR Identifier	Notes / Values
Full-Time Equivalent Staff - Mental Health Consumer and Carer Workers (FteCCWrkr)	Number[7]	53	494044	Total number of full-time equivalent units. NNNN.NN
Full-Time Equivalent Staff - Other Personal Care Staff (FtePCare)	Number[7]	60	—	Total number of full-time equivalent units. NNNN.NN (Based on MeteorID: 270171)

Record length = 66

Notes

[7] (Meteor includes code 9, but that is not applicable to the MHE NMDS)

[8] METeOR includes code 9, but that is not applicable to the MHE NMDS

1.6.8. Hospital data record

Table 1.12 Data record layout - Hospital details

Data Element (Field Name)	Type [Length]	Start	METeOR Identifier	Notes / Values
Record Type (RecType)	Char[8]	1	—	Value = <i>HOSP</i>
State/Territory Identifier (State) ^[9]	Char[1]	9	269941	<ul style="list-style-type: none"> 1: New South Wales 2: Victoria 3: Queensland 4: South Australia 5: Western Australia 6: Tasmania 7: Northern Territory 8: Australian Capital Territory

Data Element (Field Name)	Type [Length]	Start	METeOR Identifier	Notes / Values
Region Identifier (RegId)	Char[2]	10	269940	AA: Region (values as specified by individual jurisdiction). Identifiers used in this collection should map to the identifiers used in data for the NMDSs for Community Mental Health Care and Residential Mental Health Care.
Organisation Identifier (OrgId)	Char[4]	12	404186	Identifiers used in this collection should map to the identifiers used in data for the NMDSs for Community Mental Health Care and Residential Mental Health Care.
Hospital Identifier (HospId)	Char[5]	16	404239	AAAAA: Hospital identifier (equals Establishment number as reported for NMDS for Admitted Patient Care)
Sector (Sector)	Char[1]	21	269977	1: Public 2: Private
Non-government Non-profit Indicator (NonProfitNgo)	Char[1]	22	378745	1: Yes 2: No 9: Not stated/ inadequately described
Hospital Name (HospName)	Char[100]	23	407430	Common name used to identify the hospital.
Geographical Location of Establishment (EstArea)	Char[9]	123	659774	Statistical Area Level 2 (SA2) code (ASGS 2016). NNNNNNNNNN
Co-Location Status (CoLocStatus)	Char[1]	132	286995	1: Co-located 2: Not co-located

Record length = 132

Notes

[9] (Meteor includes code 9, but that is not applicable to the MHE NMDS)

1.6.9. Service Unit Cluster data record

Table 1.13 Data record layout - Service Unit Cluster details

Data Element (Field Name)	Type [Length]	Start	METeOR Identifier	Notes / Values
Record Type (RecType)	Char[8]	1	–	Value = <i>CLUS</i>
State/Territory Identifier (State) ^[10]	Char[1]	9	269941	<ul style="list-style-type: none"> 1: New South Wales 2: Victoria 3: Queensland 4: South Australia 5: Western Australia 6: Tasmania 7: Northern Territory 8: Australian Capital Territory
Region Identifier (RegId)	Char[2]	10	269940	AA: Region (values as specified by individual jurisdiction). Identifiers used in this collection should map to the identifiers used in data for the NMDSs for Community Mental Health Care and Residential Mental Health Care.
Organisation Identifier (OrgId)	Char[4]	12	404186	Identifiers used in this collection should map to the identifiers used in data for the NMDSs for Community Mental Health Care and Residential Mental Health Care.

Data Element (Field Name)	Type [Length]	Start	METeOR Identifier	Notes / Values
Service Unit Cluster Identifier (ClusId)	Char[5]	16	404858	AAAAA: An identifier to indicate that a service unit is one of a cluster of service units, defined through administrative or clinical governance arrangements. If no cluster applies, set to 00000. As this field enables linking with the NMDSs for Community Mental Health Care and Residential Mental Health Care, the identifiers used in this collection should be the same.
Service Unit Cluster Name (ClusName)	Char[100]	21	409209	If no cluster applies, enter organisation name as appears in previous line.

Record length = 120

Notes

[10] (Meteor includes code 9, but that is not applicable to the MHE NMDS)

1.6.10. Admitted Patient Service Unit data record

Table 1.14 Data record layout — Admitted Patient Service Unit details

Data Element (Field Name)	Type [Length]	Start	METeOR Identifier	Notes / Values
Record Type (RecType)	Char[8]	1	—	Value = <i>ADMI</i>

Data Element (Field Name)	Type [Length]	Start	METeOR Identifier	Notes / Values
State/Territory Identifier (State) ^[11]	Char[1]	9	269941	<ul style="list-style-type: none"> 1: New South Wales 2: Victoria 3: Queensland 4: South Australia 5: Western Australia 6: Tasmania 7: Northern Territory 8: Australian Capital Territory
Region Identifier (RegId)	Char[2]	10	269940	AA: Region (values as specified by individual jurisdiction). Identifiers used in this collection should map to the identifiers used in data for the NMDSs for Community Mental Health Care and Residential Mental Health Care.
Organisation Identifier (OrgId)	Char[4]	12	404186	Identifiers used in this collection should map to the identifiers used in data for the NMDSs for Community Mental Health Care and Residential Mental Health Care.
Hospital Identifier (HospId)	Char[5]	16	404239	AAAAA: Hospital identifier (equals Establishment number as reported for NMDS for Admitted Patient Care)
Admitted Patient Service Unit Identifier (AdmId)	Char[6]	21	404390	AAAAAA: Service unit identifier. Identifiers used in this collection should map to the identifiers used in data for the NMDSs for Community Mental Health Care and Residential Mental Health Care.

Data Element (Field Name)	Type [Length]	Start	METeOR Identifier	Notes / Values
Local Hospital Network Identifier (LHNID)	Number[3]	27	680985	NNN: A unique identifier for Local Hospital Networks (LHN) established by jurisdictions. Note, this does not form part of the identifier string. It is a separate item being collected to identify hospital reporting by LHN as a result of funding model changes.
Target Population (TargetPop) ^[12]	Char[1]	30	682403	<ul style="list-style-type: none"> 1: Child and adolescent 2: Older person 3: Forensic 4: General 5: Youth 7: Not applicable
Program Type (ProgType)	Char[1]	31	288889	<ul style="list-style-type: none"> 1: Acute care 2: Other
Admitted Patient Service Unit Name (AdmiName)	Char[100]	32	407462	Common name used to identify the service unit.

Data Element (Field Name)	Type [Length]	Start	METeOR Identifier	Notes / Values
National Standards for Mental Health Services Review Status (StdsReviewSt)	Char[1]	132	573549	<p>The service unit had been reviewed by an external</p> <p>1: accreditation agency and was judged to have met the National standards.</p> <p>The service unit had been reviewed by an external accreditation</p> <p>2: agency and was judged to have met some but not all of the National standards.</p> <p>The service unit was in the process of being reviewed by an</p> <p>3: external accreditation agency but the outcomes were not known.</p> <p>The service unit was booked for review by an external accreditation agency and was engaged in self-assessment preparation prior to the formal external review.</p> <p>4:</p> <p>The service unit was engaged in self- assessment in relation to the National standards but</p> <p>5: did not have a contractual arrangement with an external accreditation agency for review.</p> <p>The service unit had not commenced the preparations for review by an</p> <p>6: external accreditation agency but this was intended to be undertaken in the future.</p>

Data Element (Field Name)	Type [Length]	Start	METeOR Identifier	Notes / Values
				<p>It had not been resolved whether the service unit would undertake</p> <p>7: review by an external accreditation agency under the National standards.</p> <p>8: The National standards are not applicable to this service unit.</p>
Depreciation (Deprec)	Number[9]	133	270279	Australian dollars. Rounded to the nearest whole dollar. N[N(8)]

Data Element (Field Name)	Type [Length]	Start	METeOR Identifier	Notes / Values
Non-Salary Recurrent Expenditure - Total (ExpNonSalTot)	Number[9]	142	287979	<p>Australian dollars. Rounded to the nearest whole dollar. N[N(8)] Total is calculated from expenditure including:</p> <ul style="list-style-type: none"> • Administrative expenses • Domestic services • Drug supplies • Food supplies • Interest payments • Medical and surgical supplies • Patient transport costs • Payments to visiting medical officers • Repairs and maintenance • Superannuation employer contributions • Other recurrent expenditure
Salaries and Wages - Total (ExpSalTot)	Number[9]	151	296577	<p>Australian dollars. Rounded to the nearest whole dollar. N[N(8)] Total is calculated from salaries and wages expenditure for all the staffing categories.</p>
Average Available Beds for Overnight-stay Patients (AdminBeds)	Number[10]	160	616014	<p>Available bed—overnight-stay admitted care, average number of beds N[N(7).N]</p>
Accrued Mental Health Care Days (MHCareDays)	Number[8]	170	286770	<p>Total number of days. N[N(7)]</p>

Data Element (Field Name)	Type [Length]	Start	METeOR Identifier	Notes / Values
Number of Separations (NSeps)	Number[6]	178	270407	Total number of separations. N[NNNNN]
Average available beds for overnight-stay mental health hospital-in-the-home patients (HitHNBeds)	Number[6]	184	646853	Available bed—overnight-stay mental health hospital-in-the-home care, average number of beds N[NNN.N]

Record length = 189

Notes

[11] (Meteor includes code 9, but that is not applicable to the MHE NMDS)

[12] METeOR includes code 9, but that is not applicable to the MHE NMDS

1.6.11. Ambulatory Patient Service Unit data record

Table 1.15 Data record layout — Ambulatory Patient Service Unit details

Data Element (Field Name)	Type [Length]	Start	METeOR Identifier	Notes / Values
Record Type (RecType)	Char[8]	1	—	Value = <i>AMBU</i>
State/Territory Identifier (State) ^[13]	Char[1]	9	269941	<ul style="list-style-type: none"> 1: New South Wales 2: Victoria 3: Queensland 4: South Australia 5: Western Australia 6: Tasmania 7: Northern Territory 8: Australian Capital Territory

Data Element (Field Name)	Type [Length]	Start	METeOR Identifier	Notes / Values
Region Identifier (RegId)	Char[2]	10	269940	AA: Region (values as specified by individual jurisdiction). Identifiers used in this collection should map to the identifiers used in data for the NMDs for Community Mental Health Care and Residential Mental Health Care.
Organisation Identifier (OrgId)	Char[4]	12	404186	Identifiers used in this collection should map to the identifiers used in data for the NMDs for Community Mental Health Care and Residential Mental Health Care.
Service Unit Cluster Identifier (ClusId)	Char[5]	16	404858	AAAAA: An identifier to indicate that a service unit is one of a cluster of service units, defined through administrative or clinical governance arrangements. If no cluster applies, set to 00000. As this field enables linking with the NMDs for Community Mental Health Care and Residential Mental Health Care, the identifiers used in this collection should be the same.
Ambulatory Service Unit Identifier (Ambuld)	Char[6]	21	404829	AAAAAA: Service unit identifier. Identifiers used in this collection should map to the identifiers used in data for the NMDs for Community Mental Health Care and Residential Mental Health Care.
Local Hospital Network Identifier (LHNID)	Number[3]	27	680985	NNN: A unique identifier for Local Hospital Networks (LHN) established by jurisdictions. Note, this does not form part of the identifier string. It is a separate item being collected to identify hospital reporting by LHN as a result of funding model changes.

Data Element (Field Name)	Type [Length]	Start	METeOR Identifier	Notes / Values
Target Population (TargetPop) ^[14]	Char[1]	30	682403	<ul style="list-style-type: none"> 1: Child and adolescent 2: Older person 3: Forensic 4: General 5: Youth 7: Not applicable
Sector (Sector)	Char[1]	31	269977	<ul style="list-style-type: none"> 1: Public 2: Private
Non-government Non-profit Indicator (NonProfitNgo)	Char[1]	32	378745	<ul style="list-style-type: none"> 1: Yes 2: No 9: Not stated/ inadequately described
Ambulatory Service Unit Name (AmbuName)	Char[100]	33	409038	Common name used to identify the service unit.
Geographical Location of Establishment (EstArea)	Char[9]	133	659774	Statistical Area Level 2 (SA2) code (ASGS 2016). NNNNNNNNN

Data Element (Field Name)	Type [Length]	Start	METeOR Identifier	Notes / Values
National Standards for Mental Health Services Review Status (StdsReviewSt)	Char[1]	142	573549	<p>The service unit had been reviewed by an external</p> <p>1: accreditation agency and was judged to have met the National standards.</p> <p>The service unit had been reviewed by an external accreditation</p> <p>2: agency and was judged to have met some but not all of the National standards.</p> <p>The service unit was in the process of being reviewed by an</p> <p>3: external accreditation agency but the outcomes were not known.</p> <p>The service unit was booked for review by an external accreditation agency and was engaged in self-assessment preparation prior to the formal external review.</p> <p>4:</p> <p>The service unit was engaged in self- assessment in relation to the National standards but</p> <p>5: did not have a contractual arrangement with an external accreditation agency for review.</p> <p>The service unit had not commenced the preparations for review by an</p> <p>6: external accreditation agency but this was intended to be undertaken in the future.</p>

Data Element (Field Name)	Type [Length]	Start	METeOR Identifier	Notes / Values
				<p>It had not been resolved whether the service unit would undertake</p> <p>7: review by an external accreditation agency under the National standards.</p> <p>8: The National standards are not applicable to this service unit.</p>
Depreciation (Deprec)	Number[9]	143	270279	Australian dollars. Rounded to the nearest whole dollar. N[N(8)]

Data Element (Field Name)	Type [Length]	Start	METeOR Identifier	Notes / Values
Non-Salary Recurrent Expenditure - Total (ExpNonSalTot)	Number[9]	152	287979	<p>Australian dollars. Rounded to the nearest whole dollar. N[N(8)] Total is calculated from expenditure including:</p> <ul style="list-style-type: none"> • Administrative expenses • Domestic services • Drug supplies • Food supplies • Interest payments • Medical and surgical supplies • Patient transport costs • Payments to visiting medical officers • Repairs and maintenance • Superannuation employer contributions • Other recurrent expenditure
Salaries and Wages - Total (ExpSalTot)	Number[9]	161	296577	<p>Australian dollars. Rounded to the nearest whole dollar. N[N(8)] Total is calculated from salaries and wages expenditure for all the staffing categories.</p>
Number of Clients Receiving Services (NClients)	Number[6]	170	494391	NNNNNN
Number of Service Contacts (NCont)	Number[6]	176	494401	NNNNNN

Record length = 181

Notes

[13] (Meteor includes code 9, but that is not applicable to the MHE NMDS)

[14] METeOR includes code 9, but that is not applicable to the MHE NMDS

1.6.12. Residential Patient Service Unit data record

Table 1.16 Data record layout — Residential Patient Service Unit details

Data Element (Field Name)	Type [Length]	Start	METeOR Identifier	Notes / Values
Record Type (RecType)	Char[8]	1	—	Value = <i>RESI</i>
State/Territory Identifier (State) [15]	Char[1]	9	269941	<ul style="list-style-type: none"> 1: New South Wales 2: Victoria 3: Queensland 4: South Australia 5: Western Australia 6: Tasmania 7: Northern Territory 8: Australian Capital Territory
Region Identifier (RegId)	Char[2]	10	269940	AA: Region (values as specified by individual jurisdiction). Identifiers used in this collection should map to the identifiers used in data for the NMDSs for Community Mental Health Care and Residential Mental Health Care.
Organisation Identifier (OrgId)	Char[4]	12	404186	Identifiers used in this collection should map to the identifiers used in data for the NMDSs for Community Mental Health Care and Residential Mental Health Care.

Service Unit Cluster Identifier (ClusId)	Char[5]	16	404858	AAAAA: An identifier to indicate that a service unit is one of a cluster of service units, defined through administrative or clinical governance arrangements. If no cluster applies, set to 00000. As this field enables linking with the NMDs for Community Mental Health Care and Residential Mental Health Care, the identifiers used in this collection should be the same.
Residential Service Unit Identifier (ResId)	Char[6]	21	404837	AAAAAA: Service unit identifier. Identifiers used in this collection should map to the identifiers used in data for the NMDs for Community Mental Health Care and Residential Mental Health Care.
Local Hospital Network Identifier (LHNID)	Number[3]	27	680985	NNN: A unique identifier for Local Hospital Networks (LHN) established by jurisdictions. Note, this does not form part of the identifier string. It is a separate item being collected to identify hospital reporting by LHN as a result of funding model changes.
Target Population (TargetPop) ^[16]	Char[1]	30	682403	<ul style="list-style-type: none"> 1: Child and adolescent 2: Older person 3: Forensic 4: General 5: Youth 7: Not applicable
Hours Staffed (HrsStaffed) ^[17]	Number[2]	31	288877	
Sector (Sector)	Char[1]	33	269977	<ul style="list-style-type: none"> 1: Public 2: Private

Non-government Non-profit Indicator (NonProfitNgo)	Char[1]	34	378745	1: Yes 2: No Not stated/ 9: inadequately described
Residential Service Unit Name (ResiName)	Char[100]	35	407496	Common name used to identify the service unit.
Geographical Location of Establishment (EstArea)	Char[9]	135	659774	Statistical Area Level 2 (SA2) code (ASGS 2016). NNNNNNNNN

<p>National Standards for Mental Health Services Review Status (StdsReviewSt)</p>	<p>Char[1]</p>	<p>144</p>	<p>573549</p>	<p>The service unit had been reviewed by an external</p> <p>1: accreditation agency and was judged to have met the National standards.</p> <p>The service unit had been reviewed by an external accreditation</p> <p>2: agency and was judged to have met some but not all of the National standards.</p> <p>The service unit was in the process of being reviewed by an external</p> <p>3: accreditation agency but the outcomes were not known.</p> <p>The service unit was booked for review by an external accreditation agency and was engaged in self-assessment preparation prior to the formal external review.</p> <p>4:</p> <p>The service unit was engaged in self- assessment in relation to the National standards but</p> <p>5: did not have a contractual arrangement with an external accreditation agency for review.</p> <p>The service unit had not commenced the preparations for review by an external</p> <p>6: accreditation agency but this was intended to be undertaken in the future.</p>
---	----------------	------------	---------------	--

				<p>It had not been resolved whether the service unit would undertake</p> <p>7: review by an external accreditation agency under the National standards.</p> <p>8: The National standards are not applicable to this service unit.</p>
Depreciation (Deprec)	Number[9]	145	270279	Australian dollars. Rounded to the nearest whole dollar. N[N(8)]

Non-Salary Recurrent Expenditure - Total (ExpNonSalTot)	Number[9]	154	287979	<p>Australian dollars. Rounded to the nearest whole dollar. N[N(8)] Total is calculated from expenditure including:</p> <ul style="list-style-type: none"> • Administrative expenses • Domestic services • Drug supplies • Food supplies • Interest payments • Medical and surgical supplies • Patient transport costs • Payments to visiting medical officers • Repairs and maintenance • Superannuation employer contributions • Other recurrent expenditure
Salaries and Wages - Total (ExpSalTot)	Number[9]	163	296577	<p>Australian dollars. Rounded to the nearest whole dollar. N[N(8)] Total is calculated from salaries and wages expenditure for all the staffing categories.</p>
Average Available Beds for Residential Mental Health Patients (ResiNBeds)	Number[6]	172	373650	<p>Average available beds, rounded to the first decimal point. NNNN.N</p>
Accrued Mental Health Care Days (MHCareDays)	Number[8]	178	286770	<p>Total number of days. N[N(7)]</p>

Number of Episodes of Residential Care (NEpi)	Number[4]	186	534013	The total number of episodes of residential care. NNNN
---	-----------	-----	--------	--

Record length = 189

Notes

[15] (Meteor includes code 9, but that is not applicable to the MHE NMDS)

[16] METeOR includes code 9, but that is not applicable to the MHE NMDS

[17] The average number of hours staffed per 24-hour period. NN

2. Submission and delivery of MHE NMDS data files

Submission, delivery and validation of the 2018-19 MHE data (version 2.30) will occur through the [MDS Validator](#). AIHW and the Department of Health will obtain jurisdictional DAT files directly from the Validator using the download functionality available to reviewers.

2.1. Timelines

All jurisdictions must submit a stage 1 compliant file using the online Validator by **29 April 2020**. The AIHW and Department of Health are aiming to have Stage 2 validation completed by **30 September 2020** in accordance with the schedule in [Table 2.1](#). This permits the updating of the MHE data on the *Mental health services in Australia* website in by early 2019.

Table 2.1 MHE NMDS 2018-19 data validation

Progress point description	Responsibility	Completion Time	Completion date
Stage 1 submission	Jurisdictions		29 April 2020
Submitter comment on all issues within the issue list	Jurisdictions	4 weeks	27 May 2020
Reviewer reply to all issues within the issue list	AIHW	6 weeks	8 July 2020
Resolution of any remaining issues	AIHW/Jurisdiction discussion as required	6 weeks	19 August 2020
Supplementary report	AIHW		19 August 2020
Jurisdictional response to supplementary report	Jurisdictions	2 weeks	2 September 2020
Resolution of outstanding issues raised by the supplementary report	AIHW/Jurisdiction discussion as required	4 weeks	30 September 2020

2.2. File type and naming convention

DAT files should be a single Fixed Format data file, with each record in the file being terminated with Carriage Return (CR) and Line Feed (LF) characters.

The data file will have the naming convention of *MHESSSYYYYYNNNNN.DAT* where:

- MHE denotes 'Mental Health Establishments'
- SSS is the abbreviation for the State name, using the following convention:
 - New South Wales = NSW

- Victoria = VIC
- Queensland = QLD
- Western Australia = WAU
- South Australia = SAU
- Tasmania = TAS
- Australian Capital Territory = ACT
- Northern Territory = NTE
- YYYY indicates the reporting year covered in the file, using the convention where financial years are abbreviated by referring to the last calendar year of the pair (for example, 2018-19 is identified as 2019)
- NNNNN represents an incremental batch number (leading zeros present).

Adherence to this approach requires that any resubmitted files should have a batch number greater than the file they replace. For example, the first MHE data file submitted by the Australian Capital Territory covering the 2018-19 year would be named 'MHEACT201900001.DAT'.

2.3. Department of Health supplementary non-government organisation information

To assist in validating the 2018-19 MHE NMDS data, states and territories are requested by the Department of Health to provide a supplementary file relating to NGO grants that provides details of organisations funded. As in previous years, this file is to be used as the basis for ensuring consistency between jurisdictions, and across years, in the reporting of NGO data.

The supplementary file should provide details on NGO grants administered in 2018-19 through both health and non-health portfolios. Data should be prepared in an Excel workbook, following the basic tabular structure below (Table 2.2).

Table 2.2 Supplementary NGO excel file

NGO name	Level at which funds are allocated to NGO (Health central, Region, Non health portfolio)	Region ID (if applicable)	Funding amount (whole Dollars)

The supplementary NGO Excel workbook should be sent via email to the Department of Health and the AIHW, when DAT files are submitted to the Validator. Please use the following email address: mentalhealth@aihw.gov.au

2.4. Additional information and queries

AIHW and Strategic Data staff are available to answer any queries regarding changes to the Validator's MHE module and validation rules. In order to obtain a coordinated response, requests should be sent to the following parties simultaneously:

AIHW

Email: mentalhealth@aihw.gov.au

Strategic Data

Email: support@validator.com.au