



Australian Government
**Australian Institute of
Health and Welfare**

Mental Health Establishments

National Minimum Data Set

2024-25 version 4.10

As at 23 July, 2024

Table of Contents

- 1. 2024-25 MHE NMDS.....3
 - 1.1. Essential definitions3
 - 1.2. Changes for 2024-25.....3
 - 1.3. Reporting statistical units3
 - 1.4. Data model of the MHE Extract.....8
 - 1.5. Data integrity 10
 - 1.6. Data set specification (DSS) 10
- 2. Submission and delivery of MHE NMDS data files..... 51
 - 2.1. Timelines 51
 - 2.2. File type and naming convention 51
 - 2.5. Department of Health supplementary non-government organisation information 52
 - 2.6. Additional information and queries 52

1. 2024-25 MHE NMDS

1.1. Essential definitions

Scope - Mental health establishments 2024-25 (METeOR ID [742046](#)).

Statistical unit - Specialised mental health service (METeOR ID [268984](#)).

1.2. Changes for 2024-25

The specific detailed changes to the 2024-25 (version 4.10) specifications, compared to 2023-24 (version 4.01) are listed below.

1.2.1. Changes to the data model

No changes to the data model have been made.

1.2.2. Changes to definitions

The definitional changes to the 2024-25 specifications, compared to 2023-24 are listed in [Table 1.1](#).

Table 1.1 Changes made to 2024-25 definitions compared to 2023-24

Data item	Details	Rationale
Establishment–Local Hospital Network identifier, code NNN	Updated to include a new value domain.	Updated to remove 241 (Kilmore and District Hospital) as a permitted value.

1.3. Reporting statistical units

The statistical units in the MHE NMDS are *Specialised Mental Health Services* METeOR identifier [268984](#). These are the:

- specialised mental health components of the state and territory health authorities, and of regions within states and territories;
- specialised mental health service organisations;
- hospitals or service unit clusters;
- service units; and
- specialised mental health services provided by private hospitals, and non-government residential service units in receipt of state or territory government funding.

In general, states and territories determine the organisational units that will report as *regions*, *organisations*, and *service units* for this NMDS.

Only those specialised mental health services provided by private hospitals and non government residential mental health services that receive state or territory government funding are included as service units for this NMDS.

Ambulatory services managed by non-government organisations (NGOs) are not defined as statistical units for this NMDS.

The following sections provide more information on each of the statistical units and reporting levels used in the MHE NMDS.

1.3.1. State or territory

This level refers to the state or territory and should be reported using the *State/Territory identifier* data element.

1.3.2. Region

The region refers to an administrative concept not a geographical one. States and territories may have one or more regions into which the state or territory is divided and to which its mental health service organisations belong. Region would be reported using the *Region identifier* (RegId) data element. In the smaller states or in the territories there may only be one or no region. In these cases, the *Region identifier* is to be reported as '00' and the *Region name* (RegName) would repeat the name of the state or territory.

1.3.3. Organisation

The organisation is defined according to the Object class *Specialised mental health service organisation* (METeOR identifier [286449](#)) and reported using the *Organisation Identifier* (OrgId) data element. An organisation is a separately constituted specialised mental health service that is responsible for the clinical governance, administration and financial management of service units providing specialised mental health care. An organisation may consist of one or more service units based in different locations and providing services in the admitted patient, residential and ambulatory settings. For example, a mental health service organisation may consist of several hospitals or two or more community centres. Where the mental health service organisation consists of multiple service units, those units can be considered to be components of the same organisation where they:

- Operate under a common clinical governance arrangement;
- Aim to work together as interlocking services that provide integrated, coordinated care to consumers across all mental health service settings; and
- Share clinical records or, in the case where there is more than one physical clinical record for each patient, staff may access (if required) the information contained in all of the physical records held by the organisation for that patient.

For most states and territories, the mental health service organisation is equivalent to the Area or District Mental Health Service. These are usually organised to provide the full range of admitted patient, residential and ambulatory services to a given catchment population. However, the term may also be used to refer to health care organisations which provide only one type of mental health service (for example, acute admitted patient care) or which serve a specialised or state-wide function.

1.3.4. Hospital or service unit cluster

A specialised mental health service organisation may consist of one or more clusters of service units providing services in admitted patient, residential and ambulatory settings. For example, a specialised mental health service organisation may consist of several hospitals (clusters of admitted patient service units) and/or two or more ambulatory or residential service clusters (for example, a cluster of child and adolescent ambulatory service units, and a cluster of aged residential service units).

To allow service units to be reported individually, but still to be identified as part of a hospital (for the admitted patient service setting), or as part of another type of cluster (for example, other cluster type for ambulatory or residential service setting), a separate reporting level has been created.

- 'Hospital' is for admitted patient service units, and
- 'Service unit cluster' is for ambulatory service units and residential service units.

Ambulatory or residential service units will not necessarily belong to a 'cluster'. However, for some ambulatory service units, the cluster the service unit belongs to may be a hospital that contains both admitted patient and ambulatory service units. In this instance, the *Service unit cluster identifier* for the ambulatory service unit would be the *Hospital identifier*. Other groups of ambulatory and residential service units could also be usefully reported as clusters. For example, clusters may exist of groups of residential services for aged persons, or groups of ambulatory service units in particular geographical areas.

Each hospital reported to the Public Hospital Establishments NMDS, with an inpatient unit in scope as specialised mental health, must be reported as a *hospital* for the purposes of the MHE NMDS.

1.3.5. Specialised mental health service units

The reporting of service units specified in this section relates to the minimum reporting that is required for NMDS purposes, defined on the basis of MHE NMDS reporting requirements. States and territories are free to report more service units than this. For example, if a hospital had two older persons acute admitted patient service units, these only need to be reported as one combined older persons acute admitted patient service unit, but could be reported as two separate service units if desired. However, identification of service units should not combine target populations—there is no code available to identify 'mixed' target populations. Therefore, where a service delivery outlet provides discrete and specifically funded programs for multiple target populations, each of these should be identified as a separate service unit.

1.3.5.1. Admitted patient setting

For the admitted patient setting, data are to be reported by target population and program type. For example, if a hospital had separate wards/programs for child and adolescent, youth, older person, general adult and forensic there would be a separate service unit reported for each. Additionally, if there are acute and other program types, that would require separate service units to be reported (that is, defined by the program type as well as the target population). For example, an older persons acute unit would be reported separately from an older persons unit providing rehabilitation or extended care. Organisations can, however, report multiple service units with the same target population and program type, if the distinction between the units is known to the organisation and expected to be separately identifiable across a number of years.

1.3.5.2. Ambulatory service setting

For the ambulatory service setting, the service unit is equivalent to the organisation's ambulatory services as a whole. However, the data element *Target population* should be used to distinguish between general adult, child and adolescent, youth, older person and forensic services. An organisation may choose to report a number of separate ambulatory service units with the same target population, however this is not compulsory.

1.3.5.3. Residential service setting

For the residential service setting, as a minimum, 24-hour staffed residential services that employ mental health trained staff on-site 24 hours per day and other services with less intensive staffing (but mental health trained staff on-site for a minimum of 6 hours a day and at least 50 hours per week) should be defined as separate service units. This applies to both government-operated residential services and government-funded residential services operated by non-government organisations. In addition, the data element *Target population* should be used to distinguish between general adult, child and adolescent, youth, older person and forensic services.

1.3.6. Sector

Sector is not considered part of the identifier. Within this NMDS, sector is an attribute of ambulatory and residential service units. Sector is an attribute of the 'Hospital' table for admitted patient service units.

1.3.7. Statistical unit identifiers

The reporting of service entities aims to create relationships between the mental health NMDSs, and where possible, the National Outcomes and Casemix Collection (NOCC), Public Hospital Establishments (PHE) NMDS and Admitted Patient Care (APC) NMDS (see [Table 1.2](#)).

The identifiers for the MHE NMDS are:

- State or territory (1 character) (use *State/Territory identifier*)
- Region (2 characters) (use *Region identifier*)
- Specialised mental health service organisation (4 characters)

- Hospital or service unit cluster (5 characters)
- Service unit (6 characters)

Identifiers should be assigned as follows:

- *State/Territory identifier*: as per *National health data dictionary* codes;
- *Region identifier*: at the discretion of each state or territory as no national code set is available;
- *Organisation identifier*: at the discretion of each state or territory as no national code set is available;
- *Hospital identifier*: the same as used in the PHE NMDS where physically separate hospitals have been distinguished; where multiple hospitals have been reported as a single establishment, new identifiers will be needed to distinguish these hospitals;
- *Service unit cluster identifier*: at the discretion of each state or territory as no national code set is available;
- *Admitted patient service unit identifier*: at the discretion of each state or territory as no national code set is available;
- *Ambulatory service unit identifier*: the same as those used in the Community Mental Health Care (CMHC) NMDS;
- *Residential service unit identifier*: the same as those used in the Residential Mental Health Care (RMHC) NMDS.

Table 1.2 Reporting requirements

Identifier element names	METeOR identifier	Community mental health care NMDS	Residential mental health care NMDS
Australian State or Territory identifier	720081	Yes	Yes
Region identifier	269940	Yes	Yes
Specialised mental health service organisation identifier	404186	Yes	Yes
Hospital/Service unit cluster identifier	722233 (MHE) / 404858 (MHE, CMHC & RMHC)	Yes	Yes
Service unit identifier	721740 (MHE) / 750360 (MHE, CMHC) / 722711 (MHE, RMHC)	Yes	Yes

The use of identical identifiers between the various Mental Health Datasets is tested via the Mental Health Establishments Skeleton files, handled by the Online Validator.

An additional identifier was introduced in the MHE NMDS 2014–15 and subsequent MHE NMDSs: the Local hospital network identifier (METeOR identifier [747936](#)). This data element is reported at the service unit level and is not part of the identifier string.

1.3.8. Consistency of identifiers across reference periods

Where no major service reorganisations have occurred, the region, organisation, service unit cluster and service unit identifiers (*Regld, Orgld, Clusld, Admild, Ambuld, Resild*) used by a jurisdiction should be preferably identical to the previous year. However, given that all jurisdictions have committed to aligning ID numbers between the different NMDS's, changes in ID numbers due to this process will be accepted, as will be the case for those jurisdictions that have undergone significant reorganisation of service delivery that warrant new service entity identifiers. In these cases, jurisdictions should provide a supplementary mapping document that clearly illustrates the changes in ID numbers between collection periods, at all levels.

Region, organisation, hospital, cluster and service unit name changes are acceptable, especially if the new name is more locally relevant. These will be identified as a change in the Online Validator, however will not affect the generation of the historical trends reports.

1.4. Data model of the MHE Extract

[Fig. 1.1](#) provides an abbreviated overview of the structure of the data to be reported. Information is provided at each level: State/Territory; Region; Organisation; Hospital/Service unit cluster; and Service unit (Admitted patient services, Residential services and Ambulatory services). Each level has a unique set of attributes which comprise the NMDS data elements and additional supplementary information.

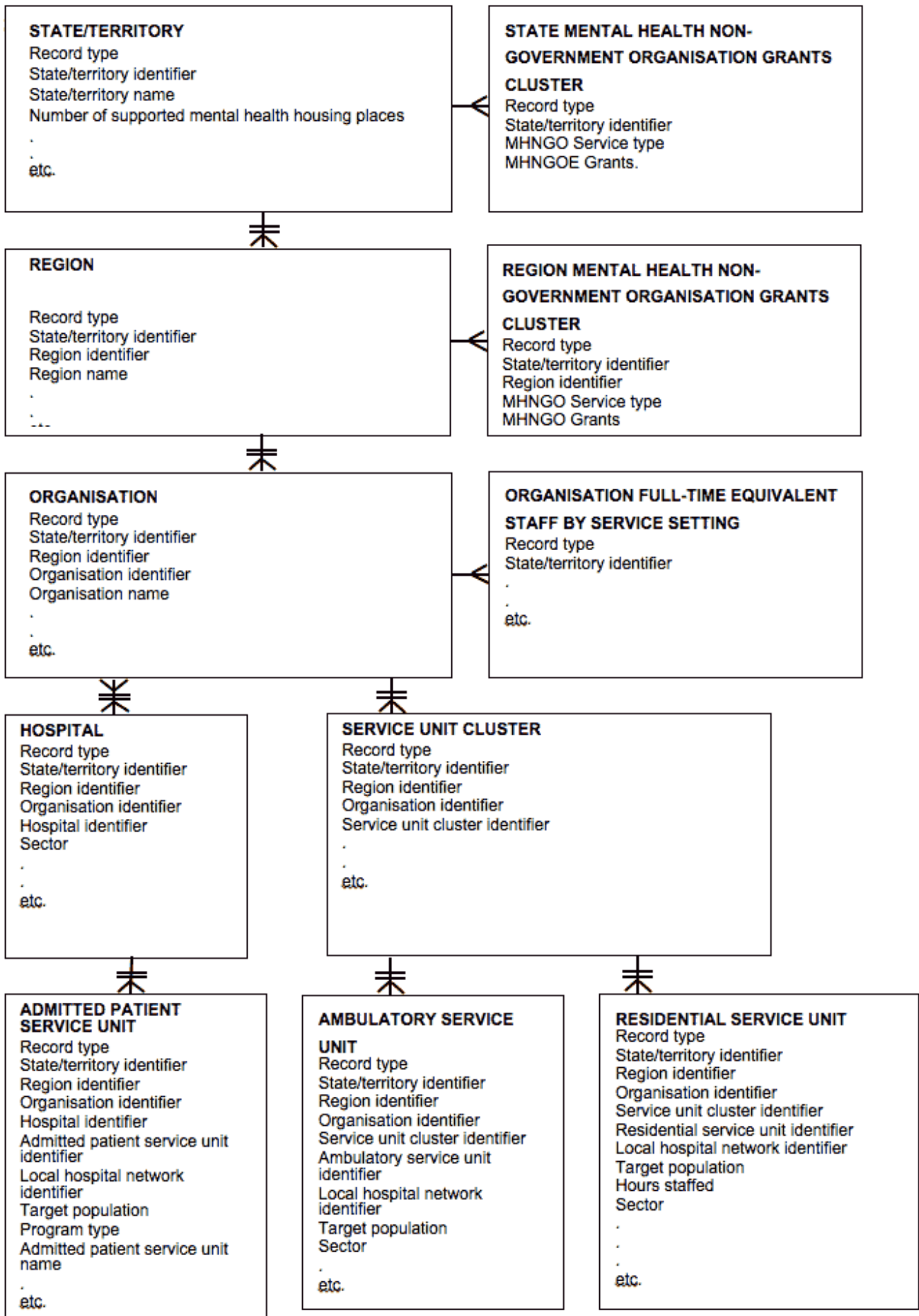


Fig. 1.1 Overview of Data model underlying the Mental Health Establishments NMDS data extract

1.5. Data integrity

For cases of missing data (that is, unknown, not stated or not available):

- For **Numeric [Num] fields**, the data should be reported as zero, using leading zeros when necessary to pad out the field to the required length. The principle here is that all numeric fields require a valid value.
- For **Text [Char] fields**, the data should be space-filled to the required length. For single character fields where a 'missing/not stated' value has been specified for a particular data element (for example, '9' has been specified for missing data), use the stated value for 'missing/not stated' rather than simply space filling.

Values in **Date [Date]** fields must be recorded in compliance with the standard format used across the *National health data dictionary*; specifically, dates must be of fixed 8 column width in the format DDMMYYYY, with leading zeros used when necessary to pad out a value. For instance, 13 March 2025 would appear as 13032025.

Values in **Numeric [Num]** fields must be zero-filled and right-justified. These should consist only of the numerals 0 to 9 and the decimal ('.') point if applicable to the data element.

Note: Fields defined as 'Numeric' are those that have numeric properties—that is, the values, for example, can be added or subtracted in a manner that is valid. Where a field uses numeric characters that do not have these properties (for example, the use of numbers for *Patient identifier*), the field is defined as 'Character'.

Values in **Character [Char]** fields must be left justified and space-filled. These should consist of any of the printable ASCII character set (that is, excluding control codes such as newline, bell and linefeed).

1.6. Data set specification (DSS)

As noted earlier, the proposed file structure for the transmission of data from jurisdictions to the AIHW is a single Fixed Format data file. The following tables specify the order in which the data items should be provided to the AIHW.

The extract format consists of a set of hierarchically ordered *Data records*, of which there are twelve types (see [Table 1.3](#)).

In each extract file for any given period, the *Data records* must be preceded by a single *File Header Record* having the structure outlined in [Table 1.4](#).

All records presented in the extract file should be grouped in the following order: Header Record; State/Territory details records; Region details records; Organisation details records; Hospital/Service unit cluster details records; and Service unit details records.

With the exception of Region, Organisation and Service unit cluster details records, all *Data records* should include the following elements in the order shown:

- Record type
- Establishment identifier (comprising: *State/Territory identifier*; *Region identifier*; *Organisation identifier*; *Hospital identifier/Service unit cluster identifier*; and *Service unit identifier*)
- Specific data in the format specified for the given record type

The order of fields in a record must be the same as the order they are listed in the Record Layouts specified below. Field values should be formatted as specified in the Record Layouts.

The first field in each record must be *Record Type*. Valid values for *Record Type* are shown in [Table 1.3](#).

Table 1.3 Valid values for Record Type

Record Type	Description
HR	File Header Record
ST	State/Territory Details
STNGOE	State-level Non-Government Organisation Payments
REG	Region details records
RENGOE	Region-level Non-Government Organisation Payments
ORG	Organisation details records
FTEORG	Organisation Full-time Equivalent Staff by Setting/Target Pop
HOSP	Hospital Details
CLUS	Service unit cluster details records
ADMI	Admitted Patient Service Unit Details
AMBU	Ambulatory Service Unit Details
RESI	Residential Service Unit Details

1.6.1. File header record

The first record of the extract file must be a File Header Record (*Record Type* = 'HR'), and it must be the only such record in the file.

The File Header Record is a quality control mechanism, which uniquely identifies each file that is sent to the AIHW (that is, who sent the file, what date the file was sent, batch number of file, etc). The information contained in the header fields will be checked against the actual details of the file to ensure that the file received has not been corrupted.

The layout of the File Header Record is shown in [Table 1.4](#).

Table 1.4 Record Layout for File Header Record within the data extract

Data Element (Field Name)	Type [Length]	Start	METEOR Identifier	Notes / Values
Record Type (RecType)	Char[8]	1	—	Value = HR
State/Territory Identifier (State) ¹	Char[1]	9	720081	1: New South Wales 2: Victoria 3: Queensland 4: South Australia 5: Western Australia 6: Tasmania 7: Northern Territory 8: Australian Capital Territory
Batch Number (BatchNo)	Char[9]	10	—	Represents the YYYNNNNNN component of the extract file name.
Report Period Start Date (RepStart)	Date[8]	19	—	Report period start date
Report Period End Date (RepEnd)	Date[8]	27	—	Report period end date
Data File Generation Date (GenDt)	Date[8]	35	—	Data file generation date
Data File Type (FileType)	Char[3]	43	—	Value = MHE
MHE Specification Version Number (SpecVer)	Char[5]	46	—	Value = 04.10

Record length = 50

Notes

[1]
(METEOR includes code 9, but that is not applicable to the MHE NMDS)

1.6.2. State/Territory data record

The extract format for the *Data records* is specified in detail in tables [Table 1.4](#) to [Table 1.15](#). The order of fields in each record must be the same as the order they are shown below. Field values should be formatted as specified.

Table 1.5 Data record layout - State/Territory details

Data Element (Field Name)	Type [Length]	Start	METEOR Identifier	Notes / Values
Record Type (RecType)	Char[8]	1	–	Value = ST
State/Territory Identifier (State) ²	Char[1]	9	720081	<p>1: New South Wales</p> <p>2: Victoria</p> <p>3: Queensland</p> <p>4: South Australia</p> <p>5: Western Australia</p> <p>6: Tasmania</p> <p>7: Northern Territory</p> <p>8: Australian Capital Territory</p>
State/Territory Name (StateName)	Char[28]	10	–	Name used to identify the State/Territory
Number of Supported Mental Health Housing Places (NHousePlaces)	Number[6]	38	390929	N(6)
NGO Payments - from Non-Health Departments (NgoOtherDepts)	Number[9]	44	722199	Australian dollars. Rounded to the nearest whole dollar. N[N(8)]
Revenue - Recoveries (RevRecov)	Number[9]	53	288685	Australian dollars. Rounded to the nearest whole dollar. N[N(8)]
Revenue - State or Territory Health Authority (RevStateHealth)	Number[9]	62	288965	Australian dollars. Rounded to the nearest whole dollar. N[N(8)]
Revenue - Other Commonwealth (RevCwlthOther)	Number[9]	71	722151	Australian dollars. Rounded to the nearest whole dollar. N[N(8)]
Revenue - Patients (RevPatients)	Number[9]	80	290583	Australian dollars. Rounded to the nearest whole dollar. N[N(8)]
Revenue - Other (RevOther)	Number[9]	89	288071	Australian dollars. Rounded to the nearest whole dollar. N[N(8)]

Data Element (Field Name)	Type [Length]	Start	METEOR Identifier	Notes / Values
Revenue - State/Territory Other (RevStateOther)	Number[9]	98	288075	Australian dollars. Rounded to the nearest whole dollar. N[N(8)]
Expenditure Not Elsewhere Reported - Academic Positions (ExpNerAcademic)	Number[9]	107	722104	Australian dollars. Rounded to the nearest whole dollar. N[N(8)]
Expenditure Not Elsewhere Reported - Education and Training (ExpNerTraining)	Number[9]	116	722106	Australian dollars. Rounded to the nearest whole dollar. N[N(8)]
Expenditure Not Elsewhere Reported - Insurance (ExpNerInsur)	Number[9]	125	722108	Australian dollars. Rounded to the nearest whole dollar. N[N(8)]
Expenditure Not Elsewhere Reported - Mental Health Act Regulation or related legislation (ExpNerMHAct)	Number[9]	134	722127	Australian dollars. Rounded to the nearest whole dollar. N[N(8)]
Expenditure Not Elsewhere Reported - Mental Health Promotion (ExpNerPromo)	Number[9]	143	722129	Australian dollars. Rounded to the nearest whole dollar. N[N(8)]
Expenditure Not Elsewhere Reported - Mental Health Research (ExpNerResearch)	Number[9]	152	722131	Australian dollars. Rounded to the nearest whole dollar. N[N(8)]
Expenditure Not Elsewhere Reported - Patient Transport Services (ExpNerTransp)	Number[9]	161	722135	Australian dollars. Rounded to the nearest whole dollar. N[N(8)]
Expenditure Not Elsewhere Reported - Program Administration (ExpNerProgAdmin)	Number[9]	170	722137	Australian dollars. Rounded to the nearest whole dollar. N[N(8)]
Expenditure Not Elsewhere Reported - Property Leasing Costs (ExpNerPropLease)	Number[9]	179	722139	Australian dollars. Rounded to the nearest whole dollar. N[N(8)]
Expenditure Not Elsewhere Reported - Service Development (ExpNerServDev)	Number[9]	188	722141	Australian dollars. Rounded to the nearest whole dollar. N[N(8)]
Expenditure Not Elsewhere Reported - Superannuation (ExpNerSuper)	Number[9]	197	722145	Australian dollars. Rounded to the nearest whole dollar. N[N(8)]
Expenditure Not Elsewhere Reported - Workers Compensation (ExpNerWorkComp)	Number[9]	206	722149	Australian dollars. Rounded to the nearest whole dollar. N[N(8)]
Expenditure Not Elsewhere Reported - Other Indirect Expenditure (ExpNerOther)	Number[9]	215	722133	Australian dollars. Rounded to the nearest whole dollar. N[N(8)]

Record length = 223

Notes

[2]
 (METEOR includes code 9, but that is not applicable to the MHE NMDS)

1.6.3. State MH NGOE Payments data record

Table 1.6 Data record layout - State MH NGOE Payments

Data Element (Field Name)	Type [Length]	Start	METEOR Identifier	Notes / Values
Record Type (RecType)	Char[8]	1	—	Value = STNGOE
State/Territory Identifier (State) ³	Char[1]	9	720081	1: New South Wales 2: Victoria 3: Queensland 4: South Australia 5: Western Australia 6: Tasmania 7: Northern Territory 8: Australian Capital Territory

Data Element (Field Name)	Type [Length]	Start	METEOR Identifier	Notes / Values
Mental health non-governmental organisation service type (MHNGOServType) ⁴	Char[2]	10	567352	<p>01: Counselling – face-to-face</p> <p>02: Counselling, support, information and referral – telephone</p> <p>03: Counselling, support, information and referral – online</p> <p>04: Self-help – online</p> <p>05: Group support activities</p> <p>06: Mutual support and self-help</p> <p>07: Staffed residential services</p> <p>08: Personalised support – linked to housing</p> <p>09: Personalised support – other</p> <p>10: Family and carer support</p> <p>11: Individual advocacy</p> <p>12: Care coordination</p> <p>13: Service integration infrastructure</p> <p>14: Education, employment and training</p> <p>15: Sector development and representation</p> <p>16: Mental health promotion</p> <p>17: Mental illness prevention</p> <p>88: Other and unspecified services</p>

Data Element (Field Name)	Type [Length]	Start	METEOR Identifier	Notes / Values
Mental health non-governmental organisation payments (MHNGOEGrants)	Number[9]	12	721707	(This Data element is supplied through an administrative data cluster in METEOR 721704) All references to 'Grants' were updated to 'Payments' in the MHE NMDS in 2020-21 as a more accurate reflection of the expenditure reported for non-government organisations. The short name MHNGOEGrants remains unchanged as data reported to this item will not change and is comparable with historical data.

Record length = 20

Notes

[3]

(METEOR includes code 9, but that is not applicable to the MHE NMDS)

[4]

(This Data element is supplied through an administrative data cluster in METEOR 721704)

1.6.4. Region data record

Table 1.7 Data record layout - Region details

Data Element (Field Name)	Type [Length]	Start	METEOR Identifier	Notes / Values
Record Type (RecType)	Char[8]	1	—	Value = REG
State/Territory Identifier (State) ⁵	Char[1]	9	720081	1: New South Wales 2: Victoria 3: Queensland 4: South Australia 5: Western Australia 6: Tasmania 7: Northern Territory 8: Australian Capital Territory

Data Element (Field Name)	Type [Length]	Start	METEOR Identifier	Notes / Values
Region Identifier (RegId)	Char[2]	10	269940	AA: Region (values as specified by individual jurisdiction). Identifiers used in this collection should map to the identifiers used in data for the NMDs for Community Mental Health Care and Residential Mental Health Care.
Region Name (RegName)	Char[60]	12	407187	Common name used to identify the Region.
Revenue - Recoveries (RevRecov)	Number[9]	72	288685	Australian dollars. Rounded to the nearest whole dollar. N[N(8)]
Revenue - State or Territory Health Authority (RevStateHealth)	Number[9]	81	288965	Australian dollars. Rounded to the nearest whole dollar. N[N(8)]
Revenue - Other Commonwealth (RevCwlthOther)	Number[9]	90	722151	Australian dollars. Rounded to the nearest whole dollar. N[N(8)]
Revenue - Patients (RevPatients)	Number[9]	99	290583	Australian dollars. Rounded to the nearest whole dollar. N[N(8)]
Revenue - Other (RevOther)	Number[9]	108	288071	Australian dollars. Rounded to the nearest whole dollar. N[N(8)]
Revenue - State/Territory Other (RevStateOther)	Number[9]	117	288075	Australian dollars. Rounded to the nearest whole dollar. N[N(8)]
Expenditure Not Elsewhere Reported - Academic Positions (ExpNerAcademic)	Number[9]	126	722104	Australian dollars. Rounded to the nearest whole dollar. N[N(8)]
Expenditure Not Elsewhere Reported - Education and Training (ExpNerTraining)	Number[9]	135	722106	Australian dollars. Rounded to the nearest whole dollar. N[N(8)]
Expenditure Not Elsewhere Reported - Insurance (ExpNerInsur)	Number[9]	144	722108	Australian dollars. Rounded to the nearest whole dollar. N[N(8)]
Expenditure Not Elsewhere Reported - Mental Health Act Regulation or related legislation (ExpNerMHAct)	Number[9]	153	722127	Australian dollars. Rounded to the nearest whole dollar. N[N(8)]
Expenditure Not Elsewhere Reported - Mental Health Promotion (ExpNerPromo)	Number[9]	162	722129	Australian dollars. Rounded to the nearest whole dollar. N[N(8)]
Expenditure Not Elsewhere Reported - Mental Health Research (ExpNerResearch)	Number[9]	171	722131	Australian dollars. Rounded to the nearest whole dollar. N[N(8)]

Data Element (Field Name)	Type [Length]	Start	METEOR Identifier	Notes / Values
Expenditure Not Elsewhere Reported - Patient Transport Services (ExpNerTransp)	Number[9]	180	722135	Australian dollars. Rounded to the nearest whole dollar. N[N(8)]
Expenditure Not Elsewhere Reported - Program Administration (ExpNerProgAdmin)	Number[9]	189	722137	Australian dollars. Rounded to the nearest whole dollar. N[N(8)]
Expenditure Not Elsewhere Reported - Property Leasing Costs (ExpNerPropLease)	Number[9]	198	722139	Australian dollars. Rounded to the nearest whole dollar. N[N(8)]
Expenditure Not Elsewhere Reported - Service Development (ExpNerServDev)	Number[9]	207	722141	Australian dollars. Rounded to the nearest whole dollar. N[N(8)]
Expenditure Not Elsewhere Reported - Superannuation (ExpNerSuper)	Number[9]	216	722145	Australian dollars. Rounded to the nearest whole dollar. N[N(8)]
Expenditure Not Elsewhere Reported - Support Services (ExpNerSuppServ)	Number[9]	225	722147	Australian dollars. Rounded to the nearest whole dollar. N[N(8)]
Expenditure Not Elsewhere Reported - Workers Compensation (ExpNerWorkComp)	Number[9]	234	722149	Australian dollars. Rounded to the nearest whole dollar. N[N(8)]
Expenditure Not Elsewhere Reported - Other Indirect Expenditure (ExpNerOther)	Number[9]	243	722133	Australian dollars. Rounded to the nearest whole dollar. N[N(8)]

Record length = 251

Notes

[5]

(METEOR includes code 9, but that is not applicable to the MHE NMDS)

1.6.5. Region MH NGOE Payments data record

Table 1.8 Data record layout - Region MH NGOE Payments

Data Element (Field Name)	Type [Length]	Start	METEOR Identifier	Notes / Values
Record Type (RecType)	Char[8]	1	—	Value = REGNGOE

Data Element (Field Name)	Type [Length]	Start	METEOR Identifier	Notes / Values
State/Territory Identifier (State) ⁶	Char[1]	9	720081	1: New South Wales 2: Victoria 3: Queensland 4: South Australia 5: Western Australia 6: Tasmania 7: Northern Territory 8: Australian Capital Territory
Region Identifier (RegId)	Char[2]	10	269940	AA: Region (values as specified by individual jurisdiction). Identifiers used in this collection should map to the identifiers used in data for the NMDSs for Community Mental Health Care and Residential Mental Health Care.

Data Element (Field Name)	Type [Length]	Start	METEOR Identifier	Notes / Values
Mental health non-governmental organisation service type (MHNGOServType) ⁷	Char[2]	12	567352	<p>01: Counselling – face-to-face</p> <p>02: Counselling, support, information and referral – telephone</p> <p>03: Counselling, support, information and referral – online</p> <p>04: Self-help – online</p> <p>05: Group support activities</p> <p>06: Mutual support and self-help</p> <p>07: Staffed residential services</p> <p>08: Personalised support – linked to housing</p> <p>09: Personalised support – other</p> <p>10: Family and carer support</p> <p>11: Individual advocacy</p> <p>12: Care coordination</p> <p>13: Service integration infrastructure</p> <p>14: Education, employment and training</p> <p>15: Sector development and representation</p> <p>16: Mental health promotion</p> <p>17: Mental illness prevention</p> <p>88: Other and unspecified services</p>

Data Element (Field Name)	Type [Length]	Start	METEOR Identifier	Notes / Values
Mental health non-governmental organisation payments (MHNGOEGrants)	Number[9]	14	721707	(This Data element is supplied through an administrative data cluster in METEOR 721704) All references to 'Grants' were updated to 'Payments' in the MHE NMDS in 2020-21 as a more accurate reflection of the expenditure reported for non-government organisations. The short name MHNGOEGrants remains unchanged as data reported to this item will not change and is comparable with historical data.

Record length = 22

Notes

[6]

(METEOR includes code 9, but that is not applicable to the MHE NMDS)

[7]

(This Data element is supplied through an administrative data cluster in METEOR 721704)

1.6.6. Organisation data record

Table 1.9 Data record layout - Organisation details

Data Element (Field Name)	Type [Length]	Start	METEOR Identifier	Notes / Values
Record Type (RecType)	Char[8]	1	—	Value = ORG
State/Territory Identifier (State) ⁸	Char[1]	9	720081	1: New South Wales 2: Victoria 3: Queensland 4: South Australia 5: Western Australia 6: Tasmania 7: Northern Territory 8: Australian Capital Territory

Data Element (Field Name)	Type [Length]	Start	METEOR Identifier	Notes / Values
Region Identifier (RegId)	Char[2]	10	269940	AA: Region (values as specified by individual jurisdiction). Identifiers used in this collection should map to the identifiers used in data for the NMDs for Community Mental Health Care and Residential Mental Health Care.
Organisation Identifier (OrgId)	Char[4]	12	404186	Identifiers used in this collection should map to the identifiers used in data for the NMDs for Community Mental Health Care and Residential Mental Health Care.
Organisation Name (OrgName)	Char[100]	16	405767	Common name used to identify the Organisation
Revenue - Recoveries (RevRecov)	Number[9]	116	288685	Australian dollars. Rounded to the nearest whole dollar. N[N(8)]
Revenue - State or Territory Health Authority (RevStateHealth)	Number[9]	125	288965	Australian dollars. Rounded to the nearest whole dollar. N[N(8)]
Revenue - Other Commonwealth (RevCwlthOther)	Number[9]	134	722151	Australian dollars. Rounded to the nearest whole dollar. N[N(8)]
Revenue - Patients (RevPatients)	Number[9]	143	290583	Australian dollars. Rounded to the nearest whole dollar. N[N(8)]
Revenue - Other (RevOther)	Number[9]	152	288071	Australian dollars. Rounded to the nearest whole dollar. N[N(8)]
Revenue - State/Territory Other (RevStateOther)	Number[9]	161	288075	Australian dollars. Rounded to the nearest whole dollar. N[N(8)]
Depreciation (Deprec)	Number[9]	170	722668	Australian dollars. Rounded to the nearest whole dollar. N[N(8)]
Non-Salary Recurrent Expenditure - Administrative Expenses (ExpNonSalAdmin)	Number[9]	179	270107	Australian dollars. Rounded to the nearest whole dollar. N[N(8)]
Non-Salary Recurrent Expenditure - Domestic Services (ExpNonSalDomest)	Number[9]	188	270283	Australian dollars. Rounded to the nearest whole dollar. N[N(8)]
Non-Salary Recurrent Expenditure - Drug Supplies (ExpNonSalDrug)	Number[9]	197	270282	Australian dollars. Rounded to the nearest whole dollar. N[N(8)]
Non-Salary Recurrent Expenditure - Food Supplies (ExpNonSalFood)	Number[9]	206	270284	Australian dollars. Rounded to the nearest whole dollar. N[N(8)]

Data Element (Field Name)	Type [Length]	Start	METEOR Identifier	Notes / Values
Non-Salary Recurrent Expenditure - Interest Payments (ExpNonSalInterest)	Number[9]	215	722670	Australian dollars. Rounded to the nearest whole dollar. N[N(8)]
Non-Salary Recurrent Expenditure - Medical and Surgical Supplies (ExpNonSalMedSuppl)	Number[9]	224	270358	Australian dollars. Rounded to the nearest whole dollar. N[N(8)]
Non-Salary Recurrent Expenditure - Patient Transport (ExpNonSalTransp)	Number[9]	233	270048	Australian dollars. Rounded to the nearest whole dollar. N[N(8)]
Non-Salary Recurrent Expenditure - Payments to Visiting Medical Officers (ExpNonSalVMO)	Number[9]	242	727426	Australian dollars. Rounded to the nearest whole dollar. N[N(8)]
Non-Salary Recurrent Expenditure - Repairs and Maintenance (ExpNonSalRepairs)	Number[9]	251	269970	Australian dollars. Rounded to the nearest whole dollar. N[N(8)]
Non-Salary Recurrent Expenditure - Superannuation (ExpNonSalSuper)	Number[9]	260	722672	Australian dollars. Rounded to the nearest whole dollar. N[N(8)]
Non-Salary Recurrent Expenditure - Other Recurrent Expenditure (ExpNonSalOther)	Number[9]	269	270126	Australian dollars. Rounded to the nearest whole dollar. N[N(8)]
Salaries and Wages - Psychiatrists (ExpSalCnsltPsych)	Number[9]	278	736961	Australian dollars. Rounded to the nearest whole dollar. N[N(8)] The Consultant Psychiatrist staffing category was removed from the MHE NMDS in 2020-21 to remove duplication with the Psychiatrist staffing category. The short names ExpSalCnsltPsych and FteCnsltPsych remain unchanged as data reported to these items will not change and is comparable with historical data.
Salaries and Wages - Psychiatry Registrars and Trainees (ExpSalPsyReg)	Number[9]	287	736956	Australian dollars. Rounded to the nearest whole dollar. N[N(8)]
Salaries and Wages - Other Medical Officers (ExpSalMedOther)	Number[9]	296	736933	Australian dollars. Rounded to the nearest whole dollar. N[N(8)]
Salaries and Wages - Registered Nurses (ExpSalNursesReg)	Number[9]	305	736950	Australian dollars. Rounded to the nearest whole dollar. N[N(8)]
Salaries and Wages - Enrolled Nurses (ExpSalNursesEnrl)	Number[9]	314	736975	Australian dollars. Rounded to the nearest whole dollar. N[N(8)]

Data Element (Field Name)	Type [Length]	Start	METEOR Identifier	Notes / Values
Salaries and Wages - Occupational Therapists (ExpSalOT)	Number[9]	323	736969	Australian dollars. Rounded to the nearest whole dollar. N[N(8)]
Salaries and Wages - Social Workers (ExpSalSocialWk)	Number[9]	332	736948	Australian dollars. Rounded to the nearest whole dollar. N[N(8)]
Salaries and Wages - Psychologists (ExpSalPsychol)	Number[9]	341	736954	Australian dollars. Rounded to the nearest whole dollar. N[N(8)]
Salaries and Wages - Other Diagnostic and Health Professionals (ExpSalDHPOther)	Number[9]	350	736967	Australian dollars. Rounded to the nearest whole dollar. N[N(8)]
Salaries and Wages - Administrative and Clerical Staff (ExpSalAdmin)	Number[9]	359	736979	Australian dollars. Rounded to the nearest whole dollar. N[N(8)]
Salaries and Wages - Domestic and Other Staff (ExpSalDomest)	Number[9]	368	736977	Australian dollars. Rounded to the nearest whole dollar. N[N(8)]
Salaries and Wages - Mental Health Carer Workers (ExpSalCarerWrkr)	Number[9]	377	736973	Australian dollars. Rounded to the nearest whole dollar. N[N(8)]
Salaries and Wages - Mental Health Consumer Workers (ExpSalConsrWrkr)	Number[9]	386	736971	Australian dollars. Rounded to the nearest whole dollar. N[N(8)]
Salaries and Wages - Other Personal Care Staff (ExpSalPCare)	Number[9]	395	736965	Australian dollars. Rounded to the nearest whole dollar. N[N(8)]
Salaries and Wages - Aboriginal and Torres Strait Islander mental health workers (ExpSalATSIMHWkr)	Number[9]	404	736981	Australian dollars. Rounded to the nearest whole dollar. N[N(8)]
Full-Time Equivalent Staff - Psychiatrists (FteCnsltPsych)	Number[7]	413	—	Total number of full-time equivalent units. NNNN.NN (Based on METEOR ID: 717129) The Consultant Psychiatrist staffing category was removed from the MHE NMDS in 2020-21 to remove duplication with the Psychiatrist staffing category. The short names ExpSalCnsltPsych and FteCnsltPsych remain unchanged as data reported to these items will not change and is comparable with historical data.
Full-Time Equivalent Staff - Psychiatry Registrars and Trainees (FtePsyReg)	Number[7]	420	—	Total number of full-time equivalent units. NNNN.NN (Based on METEOR ID: 718870)

Data Element (Field Name)	Type [Length]	Start	METEOR Identifier	Notes / Values
Full-Time Equivalent Staff - Other Medical Officers (FteMedOther)	Number[7]	427	—	Total number of full-time equivalent units. NNNN.NN (Based on METEOR ID: 718767)
Full-Time Equivalent Staff - Registered Nurses (FteNursesReg)	Number[7]	434	—	Total number of full-time equivalent units. NNNN.NN (Based on METEOR ID: 722533)
Full-Time Equivalent Staff - Enrolled Nurses (FteNursesEnrl)	Number[7]	441	—	Total number of full-time equivalent units. NNNN.NN (Based on METEOR ID: 718653)
Full-Time Equivalent Staff - Occupational Therapists (FteOT)	Number[7]	448	—	Total number of full-time equivalent units. NNNN.NN (Based on METEOR ID: 718714)
Full-Time Equivalent Staff - Social Workers (FteSocialWk)	Number[7]	455	—	Total number of full-time equivalent units. NNNN.NN (Based on METEOR ID: 722537)
Full-Time Equivalent Staff - Psychologists (FtePsychol)	Number[7]	462	—	Total number of full-time equivalent units. NNNN.NN (Based on METEOR ID: 722174)
Full-Time Equivalent Staff - Other Diagnostic and Health Professionals (FteDHPOther)	Number[7]	469	—	Total number of full-time equivalent units. NNNN.NN (Based on METEOR ID: 722518)
Full-Time Equivalent Staff - Administrative and Clerical Staff (FteAdmin)	Number[7]	476	—	Total number of full-time equivalent units. NNNN.NN (Based on METEOR ID: 722509)
Full-Time Equivalent Staff - Domestic and Other Staff (FteDomest)	Number[7]	483	—	Total number of full-time equivalent units. NNNN.NN (Based on METEOR ID: 722513)
Full-Time Equivalent Staff - Mental Health Carer Workers (FteCarerWrkr)	Number[7]	490	718699	Total number of full-time equivalent units. NNNN.NN
Full-Time Equivalent Staff - Mental Health Consumer Workers (FteConsrWrkr)	Number[7]	497	450821	Total number of full-time equivalent units. NNNN.NN
Full-Time Equivalent Staff - Other Personal Care Staff (FtePCare)	Number[7]	504	—	Total number of full-time equivalent units. NNNN.NN (Based on METEOR ID: 722521)
Full-Time Equivalent Staff - Aboriginal and Torres Strait Islander mental health workers (FteATSIMHWkr)	Number[7]	511	722204	Total number of full-time equivalent units. NNNN.NN
Expenditure Not Elsewhere Reported - Academic Positions (ExpNerAcademic)	Number[9]	518	722104	Australian dollars. Rounded to the nearest whole dollar. N[N(8)]

Data Element (Field Name)	Type [Length]	Start	METEOR Identifier	Notes / Values
Expenditure Not Elsewhere Reported - Education and Training (ExpNerTraining)	Number[9]	527	722106	Australian dollars. Rounded to the nearest whole dollar. N[N(8)]
Expenditure Not Elsewhere Reported - Insurance (ExpNerInsur)	Number[9]	536	722108	Australian dollars. Rounded to the nearest whole dollar. N[N(8)]
Expenditure Not Elsewhere Reported - Mental Health Act Regulation or related legislation (ExpNerMHAct)	Number[9]	545	722127	Australian dollars. Rounded to the nearest whole dollar. N[N(8)]
Expenditure Not Elsewhere Reported - Mental Health Promotion (ExpNerPromo)	Number[9]	554	722129	Australian dollars. Rounded to the nearest whole dollar. N[N(8)]
Expenditure Not Elsewhere Reported - Mental Health Research (ExpNerResearch)	Number[9]	563	722131	Australian dollars. Rounded to the nearest whole dollar. N[N(8)]
Expenditure Not Elsewhere Reported - Patient Transport Services (ExpNerTransp)	Number[9]	572	722135	Australian dollars. Rounded to the nearest whole dollar. N[N(8)]
Expenditure Not Elsewhere Reported - Program Administration (ExpNerProgAdmin)	Number[9]	581	722137	Australian dollars. Rounded to the nearest whole dollar. N[N(8)]
Expenditure Not Elsewhere Reported - Property Leasing Costs (ExpNerPropLease)	Number[9]	590	722139	Australian dollars. Rounded to the nearest whole dollar. N[N(8)]
Expenditure Not Elsewhere Reported - Service Development (ExpNerServDev)	Number[9]	599	722141	Australian dollars. Rounded to the nearest whole dollar. N[N(8)]
Expenditure Not Elsewhere Reported - Superannuation (ExpNerSuper)	Number[9]	608	722145	Australian dollars. Rounded to the nearest whole dollar. N[N(8)]
Expenditure Not Elsewhere Reported - Support Services (ExpNerSuppServ)	Number[9]	617	722147	Australian dollars. Rounded to the nearest whole dollar. N[N(8)]
Expenditure Not Elsewhere Reported - Workers Compensation (ExpNerWorkComp)	Number[9]	626	722149	Australian dollars. Rounded to the nearest whole dollar. N[N(8)]
Expenditure Not Elsewhere Reported - Other Indirect Expenditure (ExpNerOther)	Number[9]	635	722133	Australian dollars. Rounded to the nearest whole dollar. N[N(8)]

Data Element (Field Name)	Type [Length]	Start	METEOR Identifier	Notes / Values
Carer Participation Arrangements Indicator - Carer Experience Surveys (CarerSurvey)	Char[1]	644	529231	1: Yes 2: No 9: Not stated/inadequately described
Carer Participation Arrangements Indicator - Formal Complaints Mechanism (CarerCompl)	Char[1]	645	564666	1: Yes 2: No 9: Not stated/inadequately described
Carer Participation Arrangements Indicator - Formal Participation Policy (CarerPolicy)	Char[1]	646	529235	1: Yes 2: No 9: Not stated/inadequately described
Carer Participation Arrangements Indicator - Regular Discussion Groups (CarerDiscGrp)	Char[1]	647	529237	1: Yes 2: No 9: Not stated/inadequately described
Carer Representation Arrangements Indicator (CarerRep)	Char[1]	648	529383	1: Yes 2: No 9: Not stated/inadequately described
Consumer Participation Arrangements Indicator - Consumer Experience Surveys (ConsrSurvey)	Char[1]	649	529170	1: Yes 2: No 9: Not stated/inadequately described

Data Element (Field Name)	Type [Length]	Start	METEOR Identifier	Notes / Values
Consumer Participation Arrangements Indicator - Formal Complaints Mechanism (ConsrCompl)	Char[1]	650	564674	1: Yes 2: No 9: Not stated/inadequately described
Consumer Participation Arrangements Indicator - Formal Participation Policy (ConsrPolicy)	Char[1]	651	529185	1: Yes 2: No 9: Not stated/inadequately described
Consumer Participation Arrangements - Regular Discussion Groups (ConsrDiscGrp)	Char[1]	652	529224	1: Yes 2: No 9: Not stated/inadequately described
Consumer Representation Arrangements Indicator (ConsrRep)	Char[1]	653	529103	1: Yes 2: No 9: Not stated/inadequately described

Data Element (Field Name)	Type [Length]	Start	METEOR Identifier	Notes / Values
Consumer Committee Representation Arrangements (CmteeRep)	Char[1]	654	288855	<p>1: Formal position(s) for consumers exist on the organisation's management committee for the appointment of person(s) to represent the interests of consumers.</p> <p>2: Specific consumer advisory committee(s) exists to advise on all relevant mental health services managed by the organisation.</p> <p>3: Specific consumer advisory committee(s) exists to advise on some but not all relevant mental health services managed by the organisation.</p> <p>4: Consumers participate on a broadly based advisory committee which include a mixture of organisations and groups representing a wide range of interests.</p> <p>5: Consumers are not represented on any advisory committee but are encouraged to meet with senior representatives of the organisation as required.</p> <p>6: No specific arrangements exist for consumer participation in planning and evaluation of services.</p>

Record length = 654

Notes

[8]

(METEOR includes code 9, but that is not applicable to the MHE NMDS)

1.6.7. Organisation: FTE Staff by Service Setting data record

Table 1.10 Data record layout - Organisation Details: FTE Staff by Service Setting data record

Data Element (Field Name)	Type [Length]	Start	METEOR Identifier	Notes / Values
Record Type (RecType)	Char[8]	1	—	Value = FTEORG
State/Territory Identifier (State) ⁹	Char[1]	9	720081	1: New South Wales 2: Victoria 3: Queensland 4: South Australia 5: Western Australia 6: Tasmania 7: Northern Territory 8: Australian Capital Territory
Region Identifier (RegId)	Char[2]	10	269940	AA: Region (values as specified by individual jurisdiction). Identifiers used in this collection should map to the identifiers used in data for the NMDs for Community Mental Health Care and Residential Mental Health Care.
Organisation Identifier (OrgId)	Char[4]	12	404186	Identifiers used in this collection should map to the identifiers used in data for the NMDs for Community Mental Health Care and Residential Mental Health Care.
Service Setting (Setting)	Char[1]	16	493347	1: Admitted patient care setting 2: Residential care setting 3: Ambulatory care setting 4: Organisational overhead setting

Data Element (Field Name)	Type [Length]	Start	METEOR Identifier	Notes / Values
Target Population (TargetPop) ¹⁰	Char[1]	17	682403	1: Child and adolescent 2: Older person 3: Forensic 4: General 5: Youth 7: Not applicable
Full-Time Equivalent Staff - Salaried Medical Officers (FteMed)	Number[7]	18	—	Total number of full-time equivalent units. NNNN.NN (Based on METEOR ID: 722535)
Full-Time Equivalent Staff - Nurses (FteNurses)	Number[7]	25	426703	Total number of full-time equivalent units. NNNN.NN
Full-Time Equivalent Staff - Diagnostic and Health Professionals (FteDHP)	Number[7]	32	—	Total number of full-time equivalent units. NNNN.NN (Based on METEOR ID: 722511)
Full-Time Equivalent Staff - Administrative and Clerical Staff (FteAdmin)	Number[7]	39	—	Total number of full-time equivalent units. NNNN.NN (Based on METEOR ID: 722509)
Full-Time Equivalent Staff - Domestic and Other Staff (FteDomest)	Number[7]	46	—	Total number of full-time equivalent units. NNNN.NN (Based on METEOR ID: 722513)
Full-Time Equivalent Staff - Mental Health Consumer and Carer Workers (FteCCWrkr)	Number[7]	53	718707	Total number of full-time equivalent units. NNNN.NN
Full-Time Equivalent Staff - Other Personal Care Staff (FtePCare)	Number[7]	60	—	Total number of full-time equivalent units. NNNN.NN (Based on METEOR ID: 722521)
Full-Time Equivalent Staff - Aboriginal and Torres Strait Islander mental health workers (FteATSIMHWkr)	Number[7]	67	722204	Total number of full-time equivalent units. NNNN.NN

Record length = 73

Notes

[9]
(METEOR includes code 9, but that is not applicable to the MHE NMDS)

[10]
METEOR includes code 9, but that is not applicable to the MHE NMDS

1.6.8. Hospital data record

Table 1.11 Data record layout - Hospital details

Data Element (Field Name)	Type [Length]	Start	METEOR Identifier	Notes / Values
Record Type (RecType)	Char[8]	1	—	Value = HOSP
State/Territory Identifier (State) ¹¹	Char[1]	9	720081	1: New South Wales 2: Victoria 3: Queensland 4: South Australia 5: Western Australia 6: Tasmania 7: Northern Territory 8: Australian Capital Territory
Region Identifier (RegId)	Char[2]	10	269940	AA: Region (values as specified by individual jurisdiction). Identifiers used in this collection should map to the identifiers used in data for the NMDs for Community Mental Health Care and Residential Mental Health Care.
Organisation Identifier (OrgId)	Char[4]	12	404186	Identifiers used in this collection should map to the identifiers used in data for the NMDs for Community Mental Health Care and Residential Mental Health Care.
Hospital Identifier (HospId)	Char[5]	16	722233	AAAAA: Hospital identifier (equals Establishment number as reported for NMDs for Admitted Patient Care)
Sector (Sector)	Char[1]	21	269977	1: Public 2: Private

Data Element (Field Name)	Type [Length]	Start	METEOR Identifier	Notes / Values
Non-government Non-profit Indicator (NonProfitNgo)	Char[1]	22	378745	1: Yes 2: No 9: Not stated/inadequately described
Hospital Name (HospName)	Char[100]	23	407430	Common name used to identify the hospital.
Geographical Location of Establishment (EstArea)	Char[9]	123	747313	Statistical Area Level 2 (SA2) code (ASGS Edition 3). N(9)
Co-Location Status (CoLocStatus)	Char[1]	132	286995	1: Co-located 2: Not co-located

Record length = 132

Notes

[11]

(METEOR includes code 9, but that is not applicable to the MHE NMDS)

1.6.9. Service Unit Cluster data record

Table 1.12 Data record layout - Service Unit Cluster details

Data Element (Field Name)	Type [Length]	Start	METEOR Identifier	Notes / Values
Record Type (RecType)	Char[8]	1	—	Value = CLUS
State/Territory Identifier (State) ¹²	Char[1]	9	720081	1: New South Wales 2: Victoria 3: Queensland 4: South Australia 5: Western Australia 6: Tasmania 7: Northern Territory 8: Australian Capital Territory

Data Element (Field Name)	Type [Length]	Start	METEOR Identifier	Notes / Values
Region Identifier (RegId)	Char[2]	10	269940	AA: Region (values as specified by individual jurisdiction). Identifiers used in this collection should map to the identifiers used in data for the NMDSs for Community Mental Health Care and Residential Mental Health Care.
Organisation Identifier (OrgId)	Char[4]	12	404186	Identifiers used in this collection should map to the identifiers used in data for the NMDSs for Community Mental Health Care and Residential Mental Health Care.
Service Unit Cluster Identifier (ClusId)	Char[5]	16	404858	AAAAA: An identifier to indicate that a service unit is one of a cluster of service units, defined through administrative or clinical governance arrangements. If no cluster applies, set to 00000. As this field enables linking with the NMDSs for Community Mental Health Care and Residential Mental Health Care, the identifiers used in this collection should be the same.
Service Unit Cluster Name (ClusName)	Char[100]	21	409209	If no cluster applies, enter organisation name as appears in previous line.

Record length = 120

Notes

[12]

(METEOR includes code 9, but that is not applicable to the MHE NMDS)

1.6.10. Admitted Patient Service Unit data record

Table 1.13 Data record layout — Admitted Patient Service Unit details

Data Element (Field Name)	Type [Length]	Start	METEOR Identifier	Notes / Values
Record Type (RecType)	Char[8]	1	—	Value = ADMI

Data Element (Field Name)	Type [Length]	Start	METEOR Identifier	Notes / Values
State/Territory Identifier (State) ¹³	Char[1]	9	720081	<p>1: New South Wales</p> <p>2: Victoria</p> <p>3: Queensland</p> <p>4: South Australia</p> <p>5: Western Australia</p> <p>6: Tasmania</p> <p>7: Northern Territory</p> <p>8: Australian Capital Territory</p>
Region Identifier (RegId)	Char[2]	10	269940	AA: Region (values as specified by individual jurisdiction). Identifiers used in this collection should map to the identifiers used in data for the NMDSs for Community Mental Health Care and Residential Mental Health Care.
Organisation Identifier (OrgId)	Char[4]	12	404186	Identifiers used in this collection should map to the identifiers used in data for the NMDSs for Community Mental Health Care and Residential Mental Health Care.
Hospital Identifier (HospId)	Char[5]	16	722233	AAAAA: Hospital identifier (equals Establishment number as reported for NMDS for Admitted Patient Care)
Admitted Patient Service Unit Identifier (Admild)	Char[6]	21	721740	AAAAAA: Service unit identifier. Identifiers used in this collection should map to the identifiers used in data for the NMDSs for Community Mental Health Care and Residential Mental Health Care.
Local Hospital Network Identifier (LHNID)	Number[3]	27	786748	NNN: A unique identifier for Local Hospital Networks (LHN) established by jurisdictions. Note, this does not form part of the identifier string. It is a separate item being collected to identify hospital reporting by LHN as a result of funding model changes.

Data Element (Field Name)	Type [Length]	Start	METEOR Identifier	Notes / Values
Target Population (TargetPop) ¹⁴	Char[1]	30	682403	1: Child and adolescent 2: Older person 3: Forensic 4: General 5: Youth 7: Not applicable
Program Type (ProgType)	Char[1]	31	288889	1: Acute care 2: Other
Admitted Patient Service Unit Name (AdmiName)	Char[100]	32	721830	Common name used to identify the service unit.

Data Element (Field Name)	Type [Length]	Start	METEOR Identifier	Notes / Values
National Standards for Mental Health Services Review Status (StdsReviewSt)	Char[1]	132	722190	<p>1: The service unit had been reviewed and was judged to have met all of the applicable National Standards for Mental Health Services as determined by the accrediting agency.</p> <p>2: The service unit had been reviewed by an external accreditation agency and was judged to have met some but not all of the National standards for Mental Health Services.</p> <p>3: The service unit was in the process of being reviewed by an external accreditation agency but the outcomes were not known.</p> <p>4: The service unit was booked for review by an external accreditation agency and was engaged in self-assessment preparation prior to the formal external review.</p> <p>5: The service unit was engaged in self-assessment in relation to the National Standards for Mental Health Services but did not have a contractual arrangement with an external accreditation agency for review.</p> <p>6: The service unit had not commenced the preparations for review by an external accreditation agency but this was intended to be undertaken in the future.</p>

Data Element (Field Name)	Type [Length]	Start	METEOR Identifier	Notes / Values
				<p>7: It had not been resolved whether the service unit would undertake review by an external accreditation agency under the National Standards for Mental Health Services.</p> <p>8: The National standards for Mental Health Services are not applicable to this service unit.</p>
Depreciation (Deprec)	Number[9]	133	722668	Australian dollars. Rounded to the nearest whole dollar. N[N(8)]
Non-Salary Recurrent Expenditure - Total (ExpNonSalTot)	Number[9]	142	737453	<p>Australian dollars. Rounded to the nearest whole dollar. N[N(8)] Total is calculated from expenditure including:</p> <ul style="list-style-type: none"> • Administrative expenses • Domestic services • Drug supplies • Food supplies • Interest payments • Medical and surgical supplies • Patient transport costs • Payments to visiting medical officers • Repairs and maintenance • Superannuation employer contributions • Other recurrent expenditure
Salaries and Wages - Total (ExpSalTot)	Number[9]	151	736983	Australian dollars. Rounded to the nearest whole dollar. N[N(8)] Total is calculated from salaries and wages expenditure for all the staffing categories.
Average Available Beds for Overnight-stay Patients (AdminBeds)	Number[10]	160	616014	Available bed—overnight-stay admitted care, average number of beds N[N(7).N]

Data Element (Field Name)	Type [Length]	Start	METEOR Identifier	Notes / Values
Accrued Mental Health Care Days (MHCareDays)	Number[8]	170	721814	Total number of days. N[N(7)]
Number of Separations (NSeps)	Number[6]	178	270407	Total number of separations. N[NNNNN]
Average available beds for overnight-stay mental health hospital-in-the-home patients (HitHNBeds)	Number[6]	184	646853	Available bed—overnight-stay mental health hospital-in-the-home care, average number of beds N[NNN.N]

Record length = 189

Notes

[13]

(METEOR includes code 9, but that is not applicable to the MHE NMDS)

[14]

METEOR includes code 9, but that is not applicable to the MHE NMDS

1.6.11. Ambulatory Patient Service Unit data record

Table 1.14 Data record layout — Ambulatory Patient Service Unit details

Data Element (Field Name)	Type [Length]	Start	METEOR Identifier	Notes / Values
Record Type (RecType)	Char[8]	1	—	Value = AMBU
State/Territory Identifier (State) ¹⁵	Char[1]	9	720081	1: New South Wales 2: Victoria 3: Queensland 4: South Australia 5: Western Australia 6: Tasmania 7: Northern Territory 8: Australian Capital Territory
Region Identifier (RegId)	Char[2]	10	269940	AA: Region (values as specified by individual jurisdiction). Identifiers used in this collection should map to the identifiers used in data for the NMDSs for Community Mental Health Care and Residential Mental Health Care.

Data Element (Field Name)	Type [Length]	Start	METEOR Identifier	Notes / Values
Organisation Identifier (OrgId)	Char[4]	12	404186	Identifiers used in this collection should map to the identifiers used in data for the NMDs for Community Mental Health Care and Residential Mental Health Care.
Service Unit Cluster Identifier (ClusId)	Char[5]	16	404858	AAAAA: An identifier to indicate that a service unit is one of a cluster of service units, defined through administrative or clinical governance arrangements. If no cluster applies, set to 00000. As this field enables linking with the NMDs for Community Mental Health Care and Residential Mental Health Care, the identifiers used in this collection should be the same.
Ambulatory Service Unit Identifier (Ambuld)	Char[6]	21	750360	AAAAAA: Service unit identifier. Identifiers used in this collection should map to the identifiers used in data for the NMDs for Community Mental Health Care and Residential Mental Health Care.
Local Hospital Network Identifier (LHNID)	Number[3]	27	786748	NNN: A unique identifier for Local Hospital Networks (LHN) established by jurisdictions. Note, this does not form part of the identifier string. It is a separate item being collected to identify hospital reporting by LHN as a result of funding model changes.
Target Population (TargetPop) ¹⁶	Char[1]	30	682403	1: Child and adolescent 2: Older person 3: Forensic 4: General 5: Youth 7: Not applicable
Sector (Sector)	Char[1]	31	269977	1: Public 2: Private

Data Element (Field Name)	Type [Length]	Start	METEOR Identifier	Notes / Values
Non-government Non-profit Indicator (NonProfitNgo)	Char[1]	32	378745	1: Yes 2: No 9: Not stated/inadequately described
Ambulatory Service Unit Name (AmbuName)	Char[100]	33	750374	Common name used to identify the service unit.
Geographical Location of Establishment (EstArea)	Char[9]	133	747313	Statistical Area Level 2 (SA2) code (ASGS Edition 3). N(9)

Data Element (Field Name)	Type [Length]	Start	METEOR Identifier	Notes / Values
National Standards for Mental Health Services Review Status (StdsReviewSt)	Char[1]	142	722190	<p>1: The service unit had been reviewed and was judged to have met all of the applicable National Standards for Mental Health Services as determined by the accrediting agency.</p> <p>2: The service unit had been reviewed by an external accreditation agency and was judged to have met some but not all of the National standards for Mental Health Services.</p> <p>3: The service unit was in the process of being reviewed by an external accreditation agency but the outcomes were not known.</p> <p>4: The service unit was booked for review by an external accreditation agency and was engaged in self-assessment preparation prior to the formal external review.</p> <p>5: The service unit was engaged in self-assessment in relation to the National Standards for Mental Health Services but did not have a contractual arrangement with an external accreditation agency for review.</p> <p>6: The service unit had not commenced the preparations for review by an external accreditation agency but this was intended to be undertaken in the future.</p>

Data Element (Field Name)	Type [Length]	Start	METEOR Identifier	Notes / Values
				<p>7: It had not been resolved whether the service unit would undertake review by an external accreditation agency under the National Standards for Mental Health Services.</p> <p>8: The National standards for Mental Health Services are not applicable to this service unit.</p>
Depreciation (Deprec)	Number[9]	143	722668	Australian dollars. Rounded to the nearest whole dollar. N[N(8)]
Non-Salary Recurrent Expenditure - Total (ExpNonSalTot)	Number[9]	152	737453	<p>Australian dollars. Rounded to the nearest whole dollar. N[N(8)] Total is calculated from expenditure including:</p> <ul style="list-style-type: none"> • Administrative expenses • Domestic services • Drug supplies • Food supplies • Interest payments • Medical and surgical supplies • Patient transport costs • Payments to visiting medical officers • Repairs and maintenance • Superannuation employer contributions • Other recurrent expenditure
Salaries and Wages - Total (ExpSalTot)	Number[9]	161	736983	Australian dollars. Rounded to the nearest whole dollar. N[N(8)] Total is calculated from salaries and wages expenditure for all the staffing categories.
Number of Clients Receiving Services (NClients)	Number[6]	170	721822	NNNNNN

Data Element (Field Name)	Type [Length]	Start	METEOR Identifier	Notes / Values
Number of Service Contacts (NCont)	Number[6]	176	494401	NNNNNN

Record length = 181

Notes

[15]

(METEOR includes code 9, but that is not applicable to the MHE NMDS)

[16]

METEOR includes code 9, but that is not applicable to the MHE NMDS

1.6.12. Residential Patient Service Unit data record

Table 1.15 Data record layout — Residential Patient Service Unit details

Data Element (Field Name)	Type [Length]	Start	METEOR Identifier	Notes / Values
Record Type (RecType)	Char[8]	1	—	Value = RESI
State/Territory Identifier (State) ¹⁷	Char[1]	9	720081	1: New South Wales 2: Victoria 3: Queensland 4: South Australia 5: Western Australia 6: Tasmania 7: Northern Territory 8: Australian Capital Territory
Region Identifier (RegId)	Char[2]	10	269940	AA: Region (values as specified by individual jurisdiction). Identifiers used in this collection should map to the identifiers used in data for the NMDSs for Community Mental Health Care and Residential Mental Health Care.
Organisation Identifier (OrgId)	Char[4]	12	404186	Identifiers used in this collection should map to the identifiers used in data for the NMDSs for Community Mental Health Care and Residential Mental Health Care.

Data Element (Field Name)	Type [Length]	Start	METEOR Identifier	Notes / Values
Service Unit Cluster Identifier (Clusld)	Char[5]	16	404858	AAAAA: An identifier to indicate that a service unit is one of a cluster of service units, defined through administrative or clinical governance arrangements. If no cluster applies, set to 00000. As this field enables linking with the NMDSs for Community Mental Health Care and Residential Mental Health Care, the identifiers used in this collection should be the same.
Residential Service Unit Identifier (Resild)	Char[6]	21	722711	AAAAAA: Service unit identifier. Identifiers used in this collection should map to the identifiers used in data for the NMDSs for Community Mental Health Care and Residential Mental Health Care.
Local Hospital Network Identifier (LHNID)	Number[3]	27	786748	NNN: A unique identifier for Local Hospital Networks (LHN) established by jurisdictions. Note, this does not form part of the identifier string. It is a separate item being collected to identify hospital reporting by LHN as a result of funding model changes.
Target Population (TargetPop) ¹⁸	Char[1]	30	682403	<ul style="list-style-type: none"> 1: Child and adolescent 2: Older person 3: Forensic 4: General 5: Youth 7: Not applicable
Hours Staffed (HrsStaffed) ¹⁹	Number[2]	31	721992	
Sector (Sector)	Char[1]	33	269977	<ul style="list-style-type: none"> 1: Public 2: Private

Data Element (Field Name)	Type [Length]	Start	METEOR Identifier	Notes / Values
Non-government Non-profit Indicator (NonProfitNgo)	Char[1]	34	378745	1: Yes 2: No 9: Not stated/inadequately described
Residential Service Unit Name (ResiName)	Char[100]	35	722715	Common name used to identify the service unit.
Geographical Location of Establishment (EstArea)	Char[9]	135	747313	Statistical Area Level 2 (SA2) code (ASGS Edition 3). N(9)

Data Element (Field Name)	Type [Length]	Start	METEOR Identifier	Notes / Values
National Standards for Mental Health Services Review Status (StdsReviewSt)	Char[1]	144	722190	<p>1: The service unit had been reviewed and was judged to have met all of the applicable National Standards for Mental Health Services as determined by the accrediting agency.</p> <p>2: The service unit had been reviewed by an external accreditation agency and was judged to have met some but not all of the National standards for Mental Health Services.</p> <p>3: The service unit was in the process of being reviewed by an external accreditation agency but the outcomes were not known.</p> <p>4: The service unit was booked for review by an external accreditation agency and was engaged in self-assessment preparation prior to the formal external review.</p> <p>5: The service unit was engaged in self-assessment in relation to the National Standards for Mental Health Services but did not have a contractual arrangement with an external accreditation agency for review.</p> <p>6: The service unit had not commenced the preparations for review by an external accreditation agency but this was intended to be undertaken in the future.</p>

Data Element (Field Name)	Type [Length]	Start	METEOR Identifier	Notes / Values
				<p>7: It had not been resolved whether the service unit would undertake review by an external accreditation agency under the National Standards for Mental Health Services.</p> <p>8: The National standards for Mental Health Services are not applicable to this service unit.</p>
Depreciation (Deprec)	Number[9]	145	722668	Australian dollars. Rounded to the nearest whole dollar. N[N(8)]
Non-Salary Recurrent Expenditure - Total (ExpNonSalTot)	Number[9]	154	737453	<p>Australian dollars. Rounded to the nearest whole dollar. N[N(8)] Total is calculated from expenditure including:</p> <ul style="list-style-type: none"> • Administrative expenses • Domestic services • Drug supplies • Food supplies • Interest payments • Medical and surgical supplies • Patient transport costs • Payments to visiting medical officers • Repairs and maintenance • Superannuation employer contributions • Other recurrent expenditure
Salaries and Wages - Total (ExpSalTot)	Number[9]	163	736983	Australian dollars. Rounded to the nearest whole dollar. N[N(8)] Total is calculated from salaries and wages expenditure for all the staffing categories.
Average Available Beds for Residential Mental Health Patients (ResiNBeds)	Number[6]	172	717123	Average available beds, rounded to the first decimal point. NNNN.N

Data Element (Field Name)	Type [Length]	Start	METEOR Identifier	Notes / Values
Accrued Mental Health Care Days (MHCareDays)	Number[8]	178	721814	Total number of days. N[N(7)]
Number of Episodes of Residential Care (NEpi)	Number[4]	186	721810	The total number of episodes of residential care. NNNN

Record length = 189

Notes

[17]

(METEOR includes code 9, but that is not applicable to the MHE NMDS)

[18]

METEOR includes code 9, but that is not applicable to the MHE NMDS

[19]

The average number of hours staffed per 24-hour period. NN

2. Submission and delivery of MHE NMDS data files

Submission, delivery and validation of the 2024-25 MHE data (version 4.10) will occur through the [Online Validator](#). AIHW and the Department of Health will obtain jurisdictional DAT files directly from the Validator using the download functionality available to reviewers.

2.1. Timelines

All jurisdictions must submit a stage 1 compliant file using the Online Validator by **17 April 2026**. The AIHW and Department of Health are aiming to have Stage 2 validation completed by **18 September 2026** in accordance with the schedule in [Table 2.1](#). This permits the updating of the MHE data on the *Mental health online report* website in by early 2027.

Table 2.1 MHE NMDS 2024-25 data validation

Progress point description	Responsibility	Completion Time	Completion date
Stage 1 submission	Jurisdictions		17 April 2026
Submitter comment on all issues within the issue list	Jurisdictions	4 weeks	15 May 2026
Reviewer reply to all issues within the issue list	AIHW	6 weeks	26 June 2026
Resolution of any remaining issues	AIHW/Jurisdiction discussion as required	6 weeks	7 August 2026
Supplementary report	AIHW		7 August 2026
Jurisdictional response to supplementary report	Jurisdictions	2 weeks	21 August 2026
Resolution of outstanding issues raised by the supplementary report	AIHW/Jurisdiction discussion as required	4 weeks	18 September 2026

2.2. File type and naming convention

DAT files should be a single Fixed Format data file, with each record in the file being terminated with Carriage Return (CR) and Line Feed (LF) characters.

The data file will have the naming convention of *MHESSYYYYNNNNN.DAT* where:

- MHE denotes 'Mental Health Establishments'
- SSS is the abbreviation for the State name, using the following convention:
 - New South Wales = NSW
 - Victoria = VIC
 - Queensland = QLD
 - Western Australia = WAU
 - South Australia = SAU

- Tasmania = TAS
- Australian Capital Territory = ACT
- Northern Territory = NTE
- YYYY indicates the reporting year covered in the file, using the convention where financial years are abbreviated by referring to the last calendar year of the pair (for example, 2024-25 is identified as 2025)
- NNNNN represents an incremental batch number (leading zeros present).

Adherence to this approach requires that any resubmitted files should have a batch number greater than the file they replace. For example, the first MHE data file submitted by the Australian Capital Territory covering the 2024-25 year would be named 'MHEACT202500001.DAT'.

2.5. Department of Health supplementary non-government organisation information

To assist in validating the 2024-25 MHE NMDS data, states and territories are requested by the Department of Health to provide a supplementary file relating to NGO payments that provides details of organisations funded. As in previous years, this file is to be used as the basis for ensuring consistency between jurisdictions, and across years, in the reporting of NGO data.

The supplementary file should provide details on NGO payments administered in 2024-25 through both health and non-health portfolios. Data should be prepared in an Excel workbook, following the basic tabular structure below (Table 2.2).

Table 2.2 Supplementary NGO excel file

NGO name	Level at which funds are allocated to NGO (Health central, Region, Non health portfolio)	Region ID (if applicable)

The supplementary NGO Excel workbook should be sent via email to the Department of Health and the AIHW, when DAT files are submitted to the Validator. Please use the following email address: mentalhealth@aihw.gov.au

2.6. Additional information and queries

AIHW and Logicly staff are available to answer any queries regarding changes to the Validator's MHE module and validation rules. In order to obtain a coordinated response, requests should be sent to the following parties simultaneously:

AIHW

Email: mentalhealth@aihw.gov.au

Logicly

Email: support@validator.com.au